

23 Callaway Court Peterborough

Vegetation assessment
and
Native vegetation removal report

A report to

Address corrected to 26 Callaway Court

Prepared by

April 2026

Contents

1	INTRODUCTION	5
1.1	Project Background	5
1.2	Objectives	5
1.3	Study Area	5
1.4	Impacts	6
2	METHODS	8
2.1	Taxonomy	8
2.2	Literature and Database Review	8
2.3	Field Survey	8
2.4	Limitations	8
2.5	Defining Significance	8
2.6	Defining and Assessing Vegetation	9
3	RESULTS	10
3.1	Ecological Vegetation Class	10
3.2	Flora	11
3.3	Vegetation Condition	11
4	ECOLOGICAL SIGNIFICANCE	12
4.1	Significant Flora	12
4.2	EVCs	12
5	LEGISLATION AND GOVERNMENT POLICY	13
5.1	Native Vegetation Permitted Clearing Regulations	13
5.1.1	Patch Native Vegetation	15
5.1.2	Scattered Tree Native Vegetation	15
5.1.3	Avoid and minimise	15
5.1.4	No Net Loss Implications	15
5.1.5	Achieving Offsets	17
5.2	Clause 52.37 Canopy Trees	18
5.2.1	Implications	18
6	CONCLUSIONS	19
	Appendix 1 ASSESSING CONSERVATION SIGNIFICANCE	20
	Appendix 2 Native vegetation removal report	21
	Appendix 3 Report of available native vegetation credits	33
7	REFERENCES	36
	Plates 1-6 Site Photographs	37

Address corrected to 26 Callaway Court

Document History

Version	Date	Prepared by
Draft	February 20 2026	
Final	March 6 2026	
Modified final	April 16 2026	

Address corrected to 26 Callaway Court

Copyright © Mark Trengove Ecological Services

This document is subject to copyright and may only be used for the purposes for which it was commissioned. The use of this document in whole or part without the permission of Mark Trengove Ecological Services is an infringement of copyright.

Disclaimer

Although Mark Trengove Ecological Services have taken all the necessary steps to ensure that an accurate document has been prepared, no liability is accepted for any damages or loss incurred as a result of reliance placed upon the report or its contents.

1 INTRODUCTION

1.1 Project Background

This report was commissioned by _____ to undertake an ecological assessment for any areas of native vegetation that occur at a section of 23 Callaway Court Peterborough.

Under Clause 52.17 of the Victorian Planning Scheme, the State has gazetted the Native Vegetation Permitted Clearing Regulations. The regulations 'introduce a risk based approach to assessing applications to remove native vegetation' (DEECA Website vi). Refer to Section 3.3 for further discussion.

1.2 Objectives

The aims of the study are to -

- Determine the extent of any native vegetation that occurs in the study area.
- Describe the vegetation of the study area.
- Undertake an assessment of any native vegetation (patch or scattered tree) that may be impacted.
- Respond to relevant legislation Clause 52.17 and Clause 52.37 of the Moyne Planning Scheme.
- Prescribe appropriate offset requirements for the removal of native vegetation from the study area.

1.3 Study Area

The study area is a section of the privately owned property situated at 23 Callaway Court (north of Callaway Court, adjacent to MacGillivaray Road) Peterborough (Figure 1).

The study area is located within the Moyne Shire Council and is zoned General Residential Zone (GRZ1) and is subject to Environmental Significance Overlay 2 (ESO2) and Significant Landscape Overlay 3 (SLO3). The study area is within the Warrnambool Plain bioregion (DEECA Website iii) and is located within the Corangamite Catchment Management Authority area.

The vegetation of the study area can be described as follows:

- Disturbed with predominately exotic plant species (planted and naturalised).
- Partially intact native vegetation.

The location of the study area is shown on Figure 1.

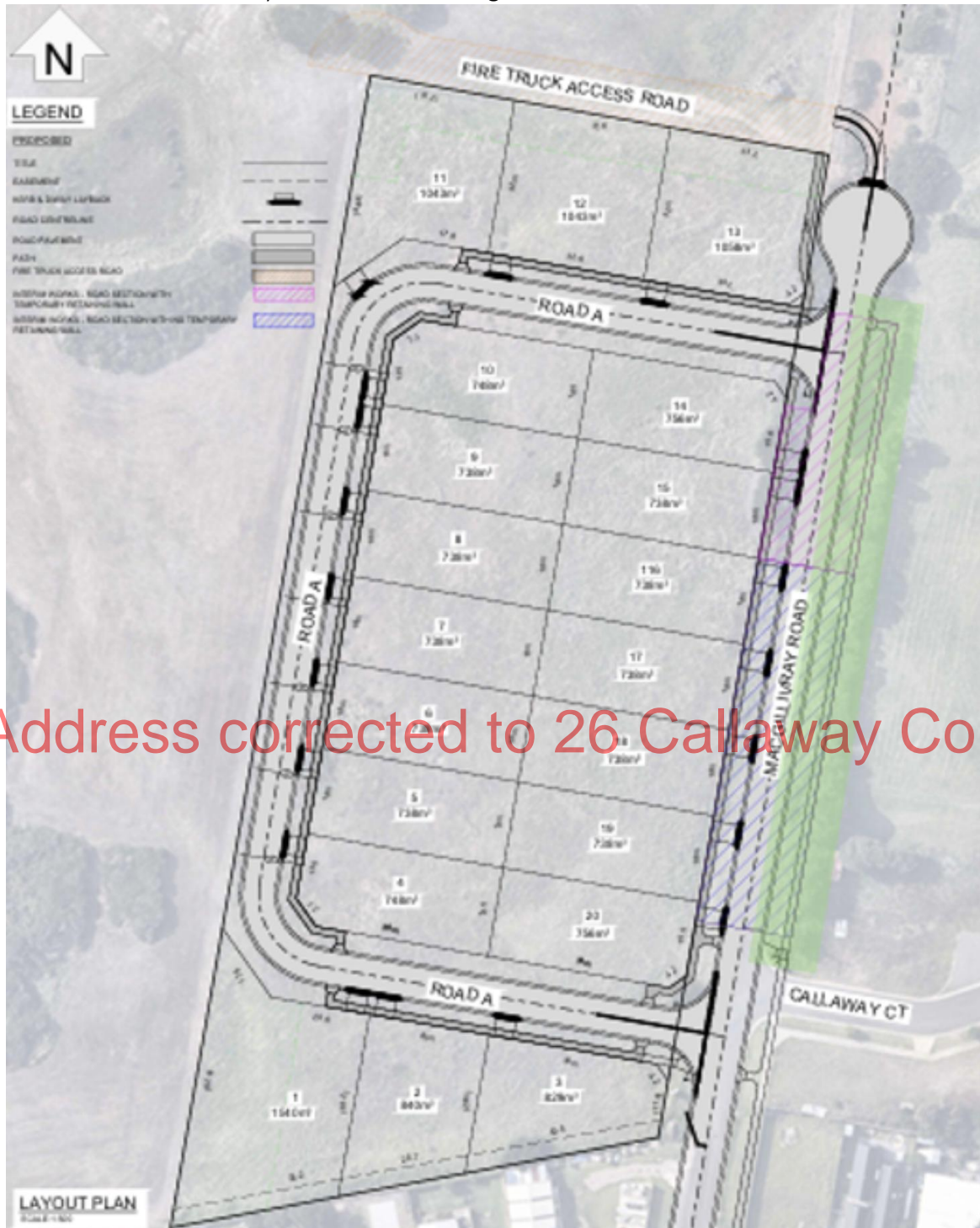


Figure 1. 23 Callaway Court Peterborough. Location of study area shown in green.

1.4 Impacts

The area of potential impact is comprised of the entire area marked in green at Figure 1. Under Clause 52.17 a permit to remove native vegetation will be required.

Refer to Plates 1-6 for photographs of the vegetation existing conditions.

Address corrected to 26 Callaway Court

2 METHODS

2.1 Taxonomy

Scientific names for plants follow the Vicflora (RBG website i). Common names for plants follow the Flora of Victoria Vols 2-4 (Walsh and Entwisle 1994-1999).

2.2 Literature and Database Review

Relevant literature and databases, including data from the following were reviewed:

- The Native Vegetation Removal tool (DEECA website iii).
- Google Earth imagery.

2.3 Field Survey

The site was inspected on foot on the 19th of February 2026. The entire study area was traversed. Records were taken of all indigenous vascular plant and dominant exotic plant species. Observations were made of the existing habitat values. Vegetation was mapped.

EVCs were determined by reference to the relevant bioregion mapping and benchmarks descriptions and review of remnant vegetation in the local area.

2.4 Limitations

The assessment was conducted during summer, a time of year that is suitable for the detection of most flora species likely to occur on site. The site was unslashed and ungrazed at the time of survey. At the time of inspection, the growth of native vegetation was sufficient to determine vegetation characteristics within the study area.

Due to the relatively degraded condition of the study area vegetation, the site inspection is considered sufficient to assess the ecological values of the site. The survey includes only vascular flora. Fauna surveys were not undertaken.

2.5 Defining Significance

A number of criteria are applied in order to assess the significance of flora species and vegetation communities. The definition of the criteria is detailed in Appendix 1.

2.6 Defining and Assessing Vegetation

Native vegetation in Victoria has been defined by DEECA as belonging to two categories. These are:

Patch native vegetation

Patch native vegetation is either:

- any area of vegetation where at least 25 per cent of the total perennial understorey plant cover is native
- any area with three or more native canopy trees where the canopy foliage cover is overlapping.
- Areas mapped as wetlands by DEECA.

Scattered Tree native vegetation

Scattered tree native vegetation is:

- a native canopy tree that does not form part of a patch.

Habitat Hectares

Habitat hectare (Vegetation Quality Assessment v1.3) is a site-based measure that combines extent and condition of native vegetation. The current condition of native vegetation is assessed against a benchmark for its Ecological Vegetation Class (EVC). EVCs are classifications of native vegetation types. The benchmark for an EVC describes the attributes of the vegetation type in its mature natural state, which reflects the pre-settlement circumstances. The condition score of native vegetation at a site can be determined through undertaking a habitat hectare assessment.

The habitat hectares of native vegetation is calculated by multiplying the current condition of the vegetation (condition score) by the extent of native vegetation (DEECA website ii).

3 RESULTS

3.1 Ecological Vegetation Class

Ecological Vegetation Classes (EVCs) are the primary level of classification of vegetation communities within Victoria. An EVC contains one or more plant (floristic) community and represents a grouping of vegetation communities with broadly similar ecological attributes. Classification of EVCs in this report follows Oates and Taranto (2001).

The pre-1750 EVC mapping of the study area undertaken by DEECA (DEECA Website iii) indicates that the study area was comprised of ECV 161 Coastal Headland Scrub.

The current study records native vegetation that accords with ECV 161 Coastal Headland Scrub. ECV 161 Coastal Headland Scrub has a bioregional conservation status of 'Vulnerable' in the Warrnambool Plain bioregion (DEECA website v). Vulnerable is defined as an EVC where between 10-30% of the pre-european distribution remains in the bioregion.

Refer to Figure 2 for DEECA EVC mapping.

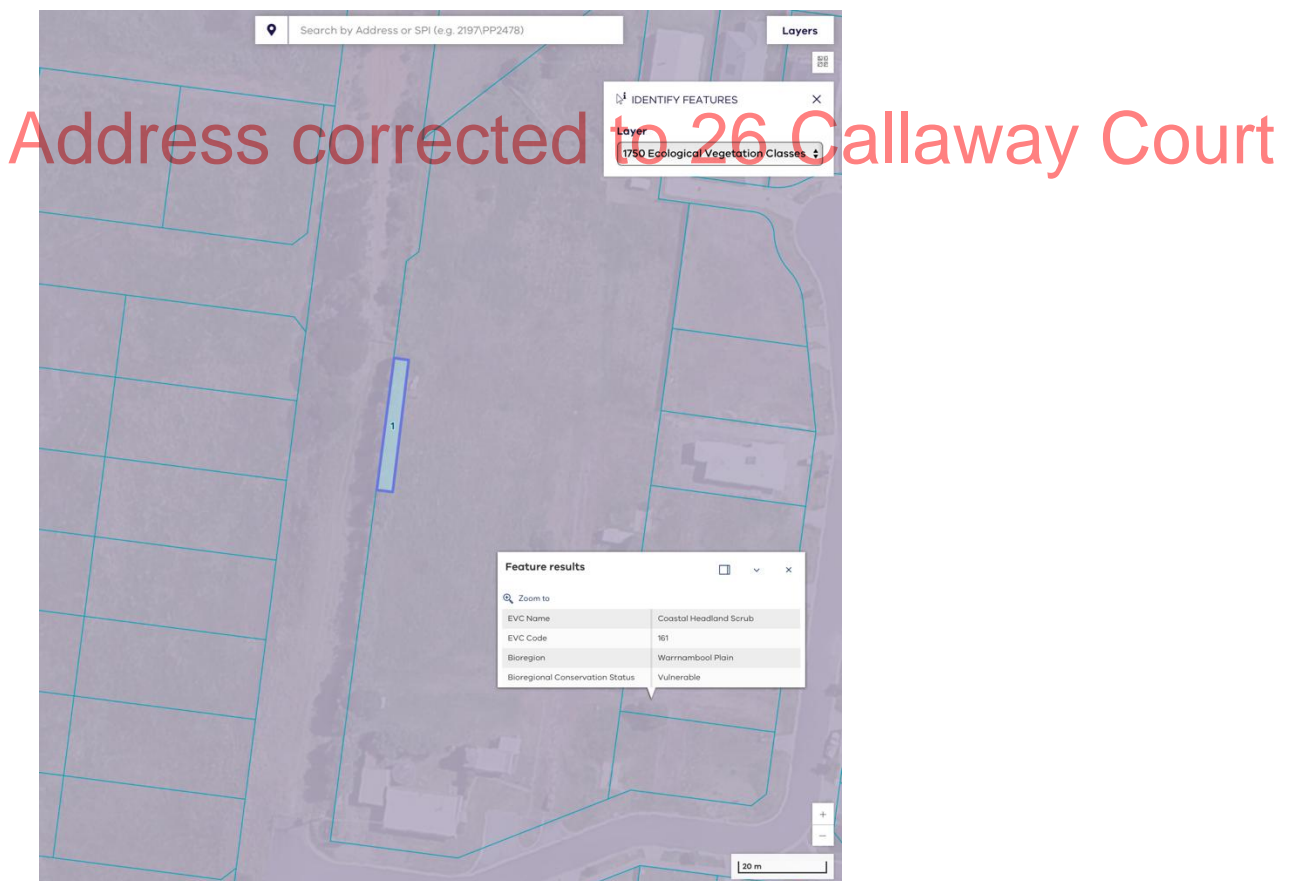


Figure 2. Distribution of EVCs pre-1750 (DEECA Website ii). ECV 161 Coastal Headland Scrub.

3.2 Flora

A total of 7 native and 14 exotic vascular plant species were recorded from within the study area this survey (*refer to Table 1*).

Table 1 Vascular Plant Species recorded within the study area this survey

Botanical Name	Common Name	Status
<i>Acaena novae-zelandiae</i>	Bidgee-widgee	Native
<i>Agrostis capillaris</i>	Creeping Bent-grass	Exotic
<i>Anagallis arvensis</i>	Pimpernel	Exotic
<i>Bromus sp.</i>	Brome Grass	Exotic
<i>Cenchrus clandestinus</i>	Kikuyu	Exotic
<i>Cirsium vulgare</i>	Spear Thistle	Exotic
<i>Cynodon dactylon</i>	Couch	Exotic
<i>Dactylis glomerata</i>	Cocksfoot	Exotic
<i>Ehrharta erecta</i>	Panic Veldt-grass	Exotic
<i>Ficinia nodosa</i>	Knobby Club-rush	Native
<i>Holcus lanatus</i>	Yorkshire Fog	Exotic
<i>Hypochaeris radicata</i>	Cat's-ear	Exotic
<i>Lagurus ovatus</i>	Hares-tail Grass	Exotic
<i>Leucopogon parviflorus</i>	Coast Beard-heath	Native
<i>Myoporum insulare</i>	Boobialla	Native
<i>Plantago coronopus</i>	Buck's-horn Plantain	Exotic
<i>Poa poiformis</i>	Coast Tussock-grass	Native
<i>Rhagodia candoleana</i>	Seaberry Saltbush	Native
<i>Sonchus oleraceus</i>	Sow Thistle	Exotic
<i>Sporobolus africanus</i>	Rat-tail Grass	Exotic
<i>Tetragonia implexicoma</i>	Bower Spionach	Native

Status:

Native – Local Conservation Significance.

3.3 Vegetation Condition

The vegetation of the study area consists of the following:

- The majority of the site consists of disturbed land that carries entirely exotic vegetation.
- Smaller areas of relatively degraded native vegetation (Figure 4).
- Planted exotic species comprised of a boundary plantation of NZ Christmas Bush *Metrosideros thomasi*.

4 ECOLOGICAL SIGNIFICANCE

4.1 Significant Flora

All 7 native plant species recorded during this survey are assessed to be of Local Conservation Significance (*refer to* Table 1 and Appendix 1).

4.2 EVCs

ECV 161 Coastal Headland Scrub has a bioregional conservation status of 'Vulnerable' in the Warrnambool Plain bioregion (DEECA website v) (*refer to* Section 3.1).

Address corrected to 26 Callaway Court

5 LEGISLATION AND GOVERNMENT POLICY

5.1 Native Vegetation Permitted Clearing Regulations

Under Particular Provision (Native Vegetation Clause 52.17) the State has gazetted the Native Vegetation Permitted Clearing Regulations. The Regulations ‘introduce a risk based approach to assessing applications to remove native vegetation’ (DEECA website i). Native vegetation is defined in Clause 72 of the Victoria Planning Provisions as plants that are indigenous to Victoria, including trees, shrubs, herbs and grasses. Plants from other states or overseas are not native and the permitted clearing regulations do not apply if they are being removed. The Guidelines considers the biodiversity value of native vegetation by measuring the following two components:

- Site-based information that can be measured or observed at a site.
- Landscape scale information that cannot be measured or observed at the site and is included in maps and models (DELWP 2017).

The purpose of Clause 52.17 is to ensure that there is no net loss to biodiversity as a result of the removal, destruction or lopping of native vegetation. This is achieved by applying the following three step approach in accordance with the *Guidelines for the removal, destruction or lopping of native vegetation* (Department of Environment, Land, Water and Planning, 2017) the *Guidelines*.

1. Avoid the removal, destruction or lopping of native vegetation.
2. Minimise impacts from the removal, destruction or lopping of native vegetation that cannot be avoided.
3. Provide an offset to compensate for the biodiversity impact if a permit is granted to remove, destroy or lop native vegetation.

To manage the removal, destruction or lopping of native vegetation to minimise land and water degradation. (DEECA Website i).

When native vegetation removal is permitted, an offset must be secured which achieves a no net loss outcome for biodiversity. To achieve this the offset makes a contribution to Victoria’s biodiversity that is equivalent to the contribution made by the native vegetation that was removed. The type and amount of offset required depends on the native vegetation being removed and the contribution it makes to Victoria’s biodiversity.

The three assessment pathways are:

- Basic – limited impacts on biodiversity.
- Intermediate – could impact on large trees, endangered EVCs, and sensitive wetlands and coastal areas.
- Detailed – could impact on large trees, endangered EVCs, sensitive wetlands and coastal areas, and could significantly impact on habitat for rare or threatened species.

The assessment pathway of an application is determined in accordance with the following requirements.

Extent of native vegetation	Location Category		
	Location 1	Location 2	Location 3
Less than 0.5 hectares and not including any large trees	Basic	Intermediate	Detailed
Less than 0.5 hectares and including one or more large trees	Intermediate	Intermediate	Detailed
0.5 hectares or more	Detailed	Detailed	Detailed

Source: DELWP (2017).

Implications for the current proposal are discussed as follows.

The study area is not located within a DEECA current wetland mapping layer.

No clearing of native vegetation is known to have occurred within the previous five years.

Refer to Figure 3 for the distribution of vegetation in the study area according to 'Location'.

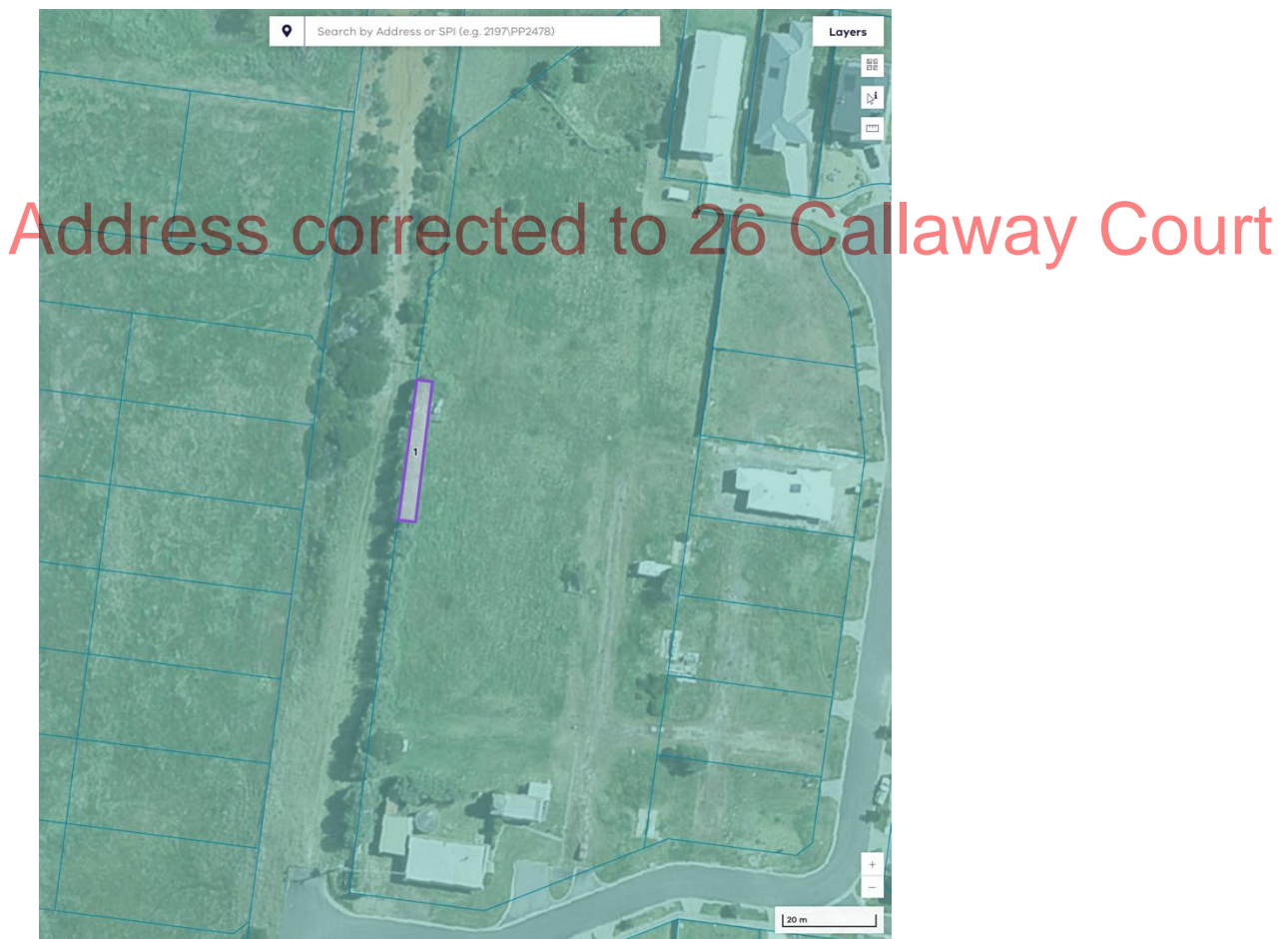


Figure 3. Distribution of vegetation according to 'Location'. Green equates to 'Location 1' (i.e., lowest risk) (DEECA Website iii). The impact areas are located within Location 1. The proposal requires the removal of Location 1 'patch' native vegetation (Figure 4).

5.1.1 Patch Native Vegetation

Under the Native Vegetation Permitted Clearing Regulations, any areas of patch native vegetation that are proposed to be removed are subject to protection/and or recruitment offsets, depending upon the characteristics of the site.

One area of patch native vegetation, totalling 0.010 ha in size, was recorded that requires removal and is therefore assessed as an impact (Figure 4).

5.1.2 Scattered Tree Native Vegetation

Under the Native Vegetation Permitted Clearing Regulations, any scattered tree native vegetation that is proposed to be removed are subject to protection/and or recruitment offsets, depending upon the characteristics of the site.

Scattered trees, that is, mature native canopy trees that exist outside of a patch, are also assessed under the Regulations. Within the bioregion, EVC 161 has no 'canopy trees'.

It is assessed that no scattered tree native vegetation is present or impacted on.

5.1.3 Avoid and minimise

Address corrected to 26 Callaway Court

The road alignment for the ultimate construction of MacGillivray Road, Peterborough has been determined via allocated road reserve dimensions and detailed engineering plans. As such, the construction of the road requires battering to achieve compliance and the vegetation is required to be removed to facilitate this.

5.1.4 No Net Loss Implications

The results show that the current native vegetation condition for the study area consists of one area of patch native vegetation that is assessed to be impacted on (0.010 ha of Location 1 patch native vegetation). Consequently, if a permit is sought to remove this vegetation, there are implications for the removal of this vegetation under the Native Vegetation Permitted Clearing Regulations.

In keeping with the requirements of the Regulations, the DEECA Native Vegetation NVR tool (DEECA website iii) has been utilized to generate a Native vegetation removal report (NVR ID: 354-20260202_7LQ) to determine the assessment pathway and to calculate vegetation offset requirements. The removal of the recorded native vegetation is as assessed to be a basic pathway application.

Should a permit to remove the native vegetation recorded this assessment be given, the offset requirements would be for the generation of 0.002 general habitat units, to be achieved within the Corangamite CMA or Moyne Council area, with a minimum strategic biodiversity value score of 0.36.

Refer to Appendix 2 for the Native vegetation removal report. Refer to Plates 1-6 for photographs of the vegetation existing conditions.

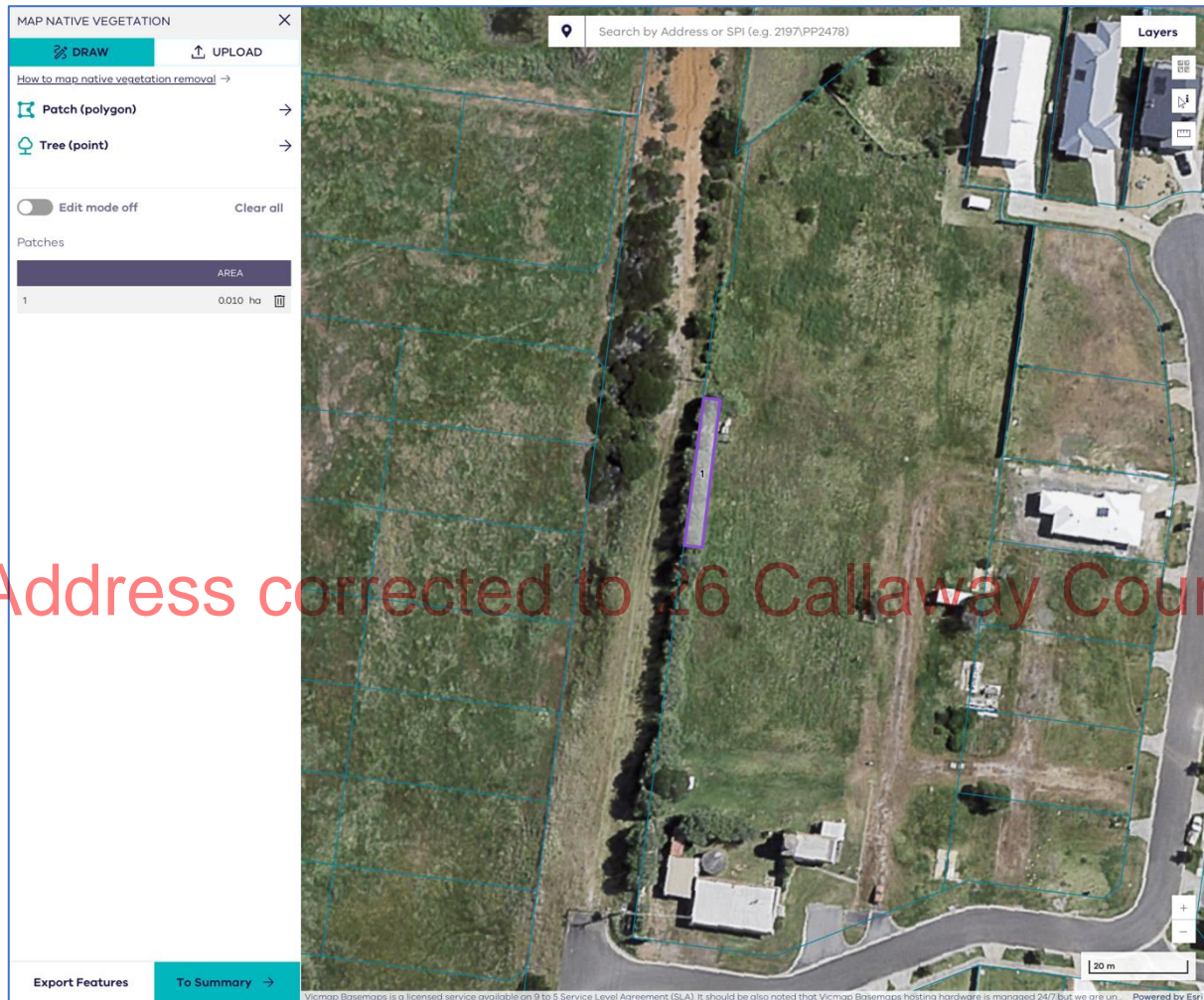


Figure 4a. Location of native vegetation recorded this survey and assessed as being impacted on.

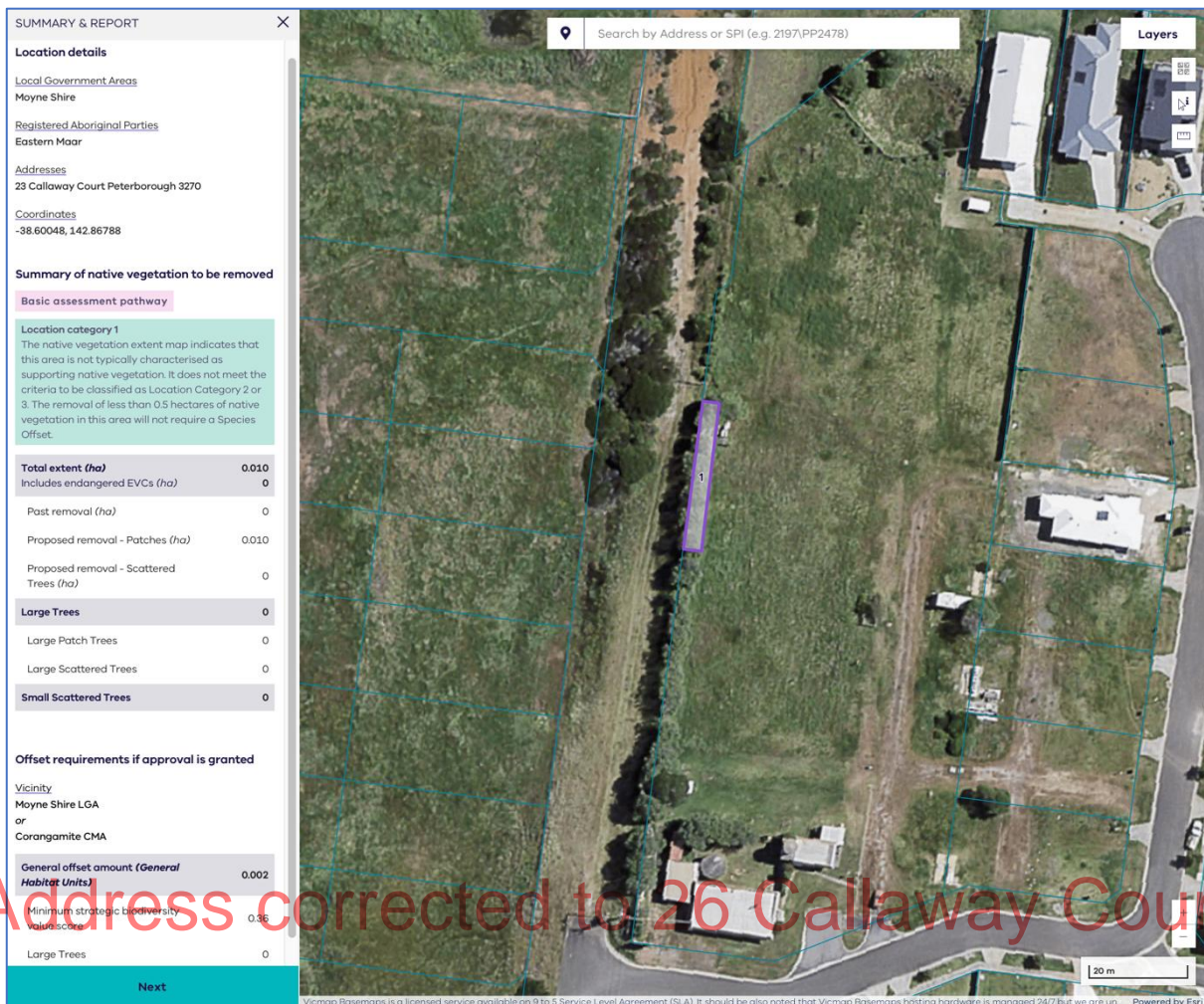


Figure 4b. Location of native vegetation assessed as being impacted on. Summary.

5.1.5 Achieving Offsets

Vegetation offsets are to be achieved by 3rd party offset purchase. A search of the DEECA offset data base (DEECA website v) indicates that there is reasonable assurance that an appropriate 3rd party offset is available. Refer Appendix 3 Report of available native vegetation credits (Report ID: 34276).

5.2 Clause 52.37 Canopy Trees

CANOPY TREES

Purpose

To protect and enhance canopy tree cover to support greener and cooler residential areas.

To maximise the retention of existing canopy tree cover where no development is proposed.

To ensure that development is designed to maximise the retention and long-term health of existing and new canopy trees and contributes to increasing canopy tree cover.

To balance the retention of existing canopy trees and residential development to meet the housing needs of Victoria's growing population.

To encourage canopy tree cover that is site and climate responsive and supports the local environment.

In Clause 52.37:

- **canopy tree** means a tree that has:
 - a height of more than 5 metres above ground level; and
 - a trunk circumference of more than 0.5 metres, measured at 1.4 metres above ground level; and
 - a canopy diameter of at least 4 metres;

<https://planning-schemes.app.planning.vic.gov.au/Moyne/ordinance/52.37>

5.2.1 Implications

The tallest implicated trees (shrubs) within the study area are less than 3 metres in height.

Consequently, there are no implications for the proposal for Clause 52.37 as no trees are more than 5 metres above ground level.

Address corrected to 26 Callaway Court

6 CONCLUSIONS

Description

The area of land at 23 Callaway Court Peterborough that is the subject of this report is assessed for presence of native vegetation and to determine the Clause 52.17 implications for any native vegetation that is proposed to be impacted.

Implications

The vegetation of the study area can be described as follows:

- Disturbed with predominately exotic plant species.
- Relatively degraded native vegetation, comprised of 7 locally significant native species which are representative of EVC 161 Coastal Headland Scrub.

ECV 161 Coastal Headland Scrub has a bioregional conservation status of 'Vulnerable' in the Warrnambool Plain bioregion.

One area of patch native vegetation, totalling 0.010 ha in size, was recorded that requires removal and is therefore assessed as an impact.

Address corrected to 26 Callaway Court

If a planning permit was issued by the Moyne Council to remove the native vegetation identified on site by this assessment, the offset requirements would be for the generation of 0.002 general habitat units, to be achieved within the Corangamite CMA or Moyne Council area, with a minimum strategic biodiversity value score of 0.36. The removal would be assessed as a 'basic assessment pathway' application.

There are no implications for the proposal for Clause 52.37 as no implicated trees are more than 5 metres above ground level.

Limitations

There are not considered to be any significant limitations to the findings of this study.

Appendix 1 ASSESSING CONSERVATION SIGNIFICANCE

Conservation significance is assessed at a range of scales including national, state, regional and local. Criteria used for determining the conservation significance of flora at national to local scales are presented below for botanical conservation significance.

Botanical Significance

National botanical significance applies to an area when it supports one or more of the following attributes:

a population of at least one nationally threatened plant species listed by Briggs and Leigh (1996) or plant species listed on the schedules to the Commonwealth *Environment Protection and Biodiversity Conservation Act 1999*.

A nationally threatened ecological community listed on the schedules of the *Environment Protection and Biodiversity Conservation Act 1999*.

State botanical significance applies to an area when it supports one or more of the following attributes:

A population of at least one plant species threatened in Victoria, as listed by the schedules to the Victorian *Flora and Fauna Guarantee Act 1988*.

An ecological community considered threatened in Victoria through its listing on the schedules of the *Flora and Fauna Guarantee Act 1988*.

Address corrected to 26 Callaway Court

Regional botanical significance applies to an area that supports one or more of the following attributes:


Supports a population of one or more regionally depleted species defined in a valid regional assessment of biodiversity (eg. Regional Native Vegetation Plan, Environment Conservation Council Report or Comprehensive Regional Assessment documents).

An ecological vegetation class that is considered endangered or vulnerable in a particular bioregion (based on Conn 1993 and the Regional Native Vegetation Plan).

An ecological vegetation class that is considered depleted in a particular bioregion (based on Conn 1993 and the Regional Native Vegetation Plan).

Local botanical significance applies to all remnant native vegetation that does not meet the above criteria. In much of Victoria native vegetation has been so depleted by past clearing and disturbance that all remaining vegetation must be considered to be of at least local conservation significance.

Appendix 2 Native vegetation removal report



Native Vegetation Removal Report

NVRR ID: 354_20260220_7LQ

This report provides information to support an application to remove, destroy or lop native vegetation in accordance with the [Guidelines for the removal, destruction or lopping of native vegetation](#) (the Guidelines). This report is **not an assessment by DEECA** of the proposed native vegetation removal. Offset requirements have been calculated using modelled condition scores.

Report details

Date created: 20/02/2026

Local Government Area: MOYNE SHIRE

Registered Aboriginal Party: Eastern Maar

Coordinates: 142.86788, -38.60048


Address: 23 CALLAWAY COURT PETERBOROUGH 3270

Regulator Notes

Removal polygons are located:

Summary of native vegetation to be removed

Assessment pathway	Basic Assessment Pathway		
Location category	Location 1 The native vegetation extent map indicates that this area is not typically characterised as supporting native vegetation. It does not meet the criteria to be classified as Location Category 2 or 3. The removal of less than 0.5 hectares of native vegetation in this area will not require a Species Offset.		
Total extent including past and proposed removal (ha)	0.01	<i>Extent of past removal (ha)</i>	0
<i>Includes endangered EVCs (ha): 0</i>		<i>Extent of proposed removal - Patches (ha)</i>	0.010
		<i>Extent of proposed removal - Scattered Trees (ha)</i>	0.000
No. Large Trees proposed to be removed	0	<i>No. Large Patch Trees</i>	0
		<i>No. Large Scattered Trees</i>	0
No. Small Scattered Trees	0		



Energy,
Environment
and Climate Action

Page 1



Offset requirements if approval is granted

Any approval granted will include a condition to secure an offset, before the removal of native vegetation, that meets the following requirements:

General Offset amount ¹	0.002 General Habitat Units
Minimum strategic biodiversity value score ²	0.36
Large Trees	0
Vicinity	Corangamite CMA or MOYNE SHIRE LGA

NB: values within tables in this document may not add to the totals shown above due to rounding

The availability of third-party offset credits can be checked using the Native Vegetation Credit Register (NVCR) Search Tool - <https://nvcr.delwp.vic.gov.au>

Address corrected to 26 Callaway Court

1. The General Offset amount required is the sum of all General Habitat Units in Appendix 1.

2. Minimum strategic biodiversity value score is 80 per cent of the weighted average score across habitat zones where a General Offset is required.



Application requirements

Applications to remove, destroy or lop native vegetation must include all the below information. If an appropriate response has not been provided the application is not complete.

Application Requirement 1 - Native vegetation removal information

If the native vegetation removal is mapped correctly, the information presented in this Native Vegetation Removal Report addresses Application Requirement 1.

Application Requirement 2 - Topographical and land information

This statement describes the topographical and land features in the vicinity of the proposed works, including the location and extent of any ridges, hilltops, wetlands and waterways, slopes of more than 20% gradient, low-lying areas, saline discharge areas or areas of erosion.

gentle slope no erosion

Application Requirement 3 - Photographs of the native vegetation to be removed

Application Requirement 3 is not addressed in this Native Vegetation Removal Report. All applications must include recent, timestamped photos of each Patch, Large Patch Tree and Scattered Tree which has been mapped in this report.

Application Requirement 4 - Past removal

If past removal has been considered correctly, the information presented in this Native Vegetation Removal Report addresses Application Requirement 4.

Application Requirement 5 - Avoid and minimise statement

This statement describes what has been done to avoid and minimise impacts on native vegetation and associated biodiversity values.

The road alignment for the ultimate construction of MacGillivray Road, Peterborough has been determined via allocated road reserve dimensions and detailed engineering plans. As such, the construction of the road requires battering to achieve compliance and the vegetation is required to be removed to facilitate this.

Application Requirement 6 - Property Vegetation Plan

This requirement only applies if an approved Property Vegetation Plan (PVP) applies to the property
Does a PVP apply to the proposal?

No

Application Requirement 7 - Defendable space statement

Where the removal of native vegetation is to create defendable space, this statement:



- Describes the bushfire threat; and
- Describes how other bushfire risk mitigation measures were considered to reduce the amount of native vegetation proposed for removal (this can also be part of the avoid and minimise statement).

This statement is not required if, If the proposed defensible space is within the Bushfire Management Overlay (BMO), and in accordance with the 'Exemption to create defensible space for a dwelling under Clause 44.06 of local planning schemes' in Clause 52.12-5.

N/A

Application Requirement 8 - Native Vegetation Precinct Plan

This requirement is only applicable if you are removing native vegetation from within an area covered by Native Vegetation Precinct Plan (NVPP), and the proposed removal is not identified as 'to be removed' within the NVPP.

Does an NVPP apply to the proposal?

No

Application Requirement 9 - Offset statement

This statement demonstrates that an offset is available and describes how the required offset will be secured. The Applicant's Guide provides information relating to this requirement.

third party offset

Address corrected to 26 Callaway Court



Next steps

Applications to remove, destroy or lop native vegetation must address all the application requirements specified in the Guidelines. If you wish to remove the mapped native vegetation you are required to apply for approval from the responsible authority (e.g. local Council). This Native vegetation removal report must be submitted with your application and meets most of the application requirements. The following requirements need to be addressed, as applicable.

Application Requirement 3 - Photographs of the native vegetation to be removed

Recent, dated photographs of the native vegetation to be removed **must be provided** with the application. All photographs must be clear, show whether the vegetation is a Patch of native vegetation, Patch Tree or Scattered Tree, and identify any Large Trees. If the area of native vegetation to be removed is large, provide photos that are indicative of the native vegetation.

Ensure photographs are attached to the application. If appropriate photographs have not been provided the application is not complete.

Application Requirement 6 - Property Vegetation Plan

If a PVP is applicable, it must be provided with the application.

Address corrected to 26 Callaway Court

Appendix 1: Description of native vegetation to be removed

General Habitat Units for each zone (Patch, Scattered Tree or Patch Tree) are calculated by the following equation in accordance with the Guidelines

General Habitat Units = extent without overlap x condition score x general landscape factor x 1.5, where the general landscape factor = 0.5 + (strategic biodiversity value score/2)

The General Offset amount required is the sum of all General Habitat Units per zone.

Native vegetation to be removed

Information provided by or on behalf of the applicant			Information calculated by NVR Map							
Zone	Type	DBH (cm)	EVC code (modelled)	Bioregional conservation status	Large Tree(s)	Condition score (modelled)	Polygon extent (ha)	Extent without overlap (ha)	SBV score	General Habitat Units
1	Patch	-	WaP_0161	Vulnerable	-	0.200	0.010	0.010	0.450	0.002

Page 6

Address corrected to 26 Callaway Court

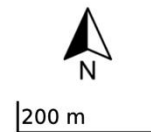
Appendix 2: Images of mapped native vegetation

1. Property in context



Address corrected to 26 Callaway Court

- Proposed Removal
- Property Boundaries



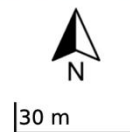


2. Aerial photograph showing mapped native vegetation



Address corrected to 26 Callaway Court

□ Proposed Removal



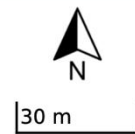


3. Location Risk Map



Address corrected to 26 Callaway Court

- Proposed Removal
- Location 1
- Location 2
- Location 3



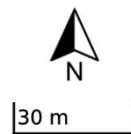


4. Strategic Biodiversity Value Score Map



Address corrected to 26 Callaway Court

- Proposed Removal
- 0.81 - 1.00
- 0.61 - 0.80
- 0.41 - 0.60
- 0.21 - 0.40
- 0.00 - 0.20

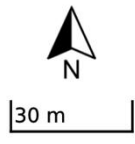
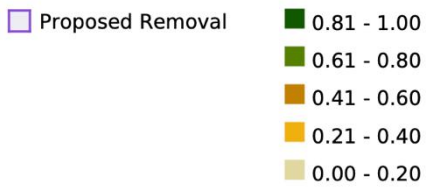




5. Condition Score Map



Address corrected to 26 Callaway Court





6. Endangered EVCs

Not Applicable

© The State of Victoria Department of Energy, Environment and Climate Action 2026



This work is licensed under a Creative Commons Attribution 4.0 International licence. You are free to re-use the work under that licence, on the condition that you credit the State of Victoria as author. The licence does not apply to any images, photographs or branding, including the Victorian Coat of Arms, the Victorian Government logo and the Department of Energy, Environment and Climate Change (DEECA) logo. To view a copy of this licence, visit <http://creativecommons.org/licenses/by/4.0/>

Disclaimer

This publication may be of assistance to you but the State of Victoria and its employees do not guarantee that the publication is without flaw of any kind or is wholly appropriate for your particular purposes and therefore disclaims all liability for any error, loss or other consequence which may arise from you relying on any information in this publication.

Address corrected to 26 Callaway Court

Appendix 3 Report of available native vegetation credits

Report of available native vegetation credits

This report lists native vegetation credits available to purchase through the Native Vegetation Credit Register.

This report is **not evidence** that an offset has been secured. An offset is only secured when the units have been purchased and allocated to a permit or other approval and an allocated credit extract is provided by the Native Vegetation Credit Register.

Date and time: 20/02/2026 03:03

Report ID: 34276

What was searched for?

General offset

General habitat units	Strategic biodiversity value	Large trees	Vicinity (Catchment Management Authority or Municipal district)	
0.002	0.36	0	CMA	Corangamite

or LGA Moyn Shire

Address corrected to 26 Callaway Court

Details of available native vegetation credits on 20 February 2026 03:03

These sites meet your requirements for general offsets.

Credit Site ID	GHU	LT	CMA	LGA	Land owner	Trader	Fixed price	Broker(s)
BBA-0114	0.536	180	Corangamite	Colac Otway Shire	Yes	Yes	No	VegLink
BBA-0639	4.539	0	Glenelg Hopkins	Moyne Shire	Yes	Yes	No	Bio Offsets, VegLink
BBA-1139_05	1.141	0	Glenelg Hopkins	Moyne Shire	No	Yes	No	VegLink
BBA-2113	0.005	59	Corangamite	Corangamite Shire	Yes	Yes	No	Bio Offsets
BBA-2252	153.73 1	0	Corangamite	Colac Otway Shire	No	Yes	No	Bio Offsets
TFN-C0140	0.292	30	Corangamite	Greater Geelong City	Yes	Yes	No	TFN
TFN-C0482	0.286	0	Corangamite	Colac Otway Shire	Yes	Yes	No	Bio Offsets
TFN-C1765	0.026	70	Corangamite	Colac Otway Shire	Yes	Yes	No	
VC_CFL-0393_02	0.144	0	Corangamite	Greater Geelong City	Yes	Yes	No	VegLink
VC_CFL-0393_03	0.181	0	Corangamite	Greater Geelong City	Yes	Yes	No	VegLink
VC_CFL-3058_01	0.010	119	Corangamite	Moorabool Shire	Yes	Yes	No	Bio Offsets, VegLink
VC_CFL-3080_01	4.536	94	Corangamite	Golden Plains Shire	Yes	Yes	No	Bio Offsets

VC_CFL-3697_01	18.297	0	Corangamite	Golden Plains Shire	Yes	Yes	No	Bio Offsets
VC_CFL-3699_01	2.457	0	Corangamite	Colac Otway Shire	No	Yes	No	Bio Offsets
VC_CFL-3718_01	6.260	864	Corangamite	Corangamite Shire	Yes	Yes	No	Bio Offsets
VC_CFL-3739_01	3.900	272	Corangamite	Colac Otway Shire	Yes	Yes	No	Bio Offsets
VC_CFL-3786_01	0.402	528	Corangamite	Corangamite Shire	Yes	Yes	No	VegLink
VC_CFL-3787_01	9.579	895	Corangamite	Colac Otway Shire	Yes	Yes	No	VegLink
VC_CFL-3798_01	1.358	208	Corangamite	Colac Otway Shire	Yes	Yes	No	VegLink
VC_CFL-3812_01	16.941	4710	Corangamite	Colac Otway Shire	Yes	Yes	No	VegLink
VC_CFL-3812_01	0.663	0	Corangamite	Colac Otway Shire	Yes	Yes	Yes	VegLink
VC_TFN-C2058_01	0.005	3	Corangamite	Colac Otway Shire	No	Yes	No	Contact NVOR

These sites meet your requirements using alternative arrangements for general offsets.

Credit Site ID	GHU	LT	CMA	LGA	Land owner	Trader	Fixed price	Broker(s)
----------------	-----	----	-----	-----	------------	--------	-------------	-----------

There are no sites listed in the Native Vegetation Credit Register that meet your offset requirements when applying the alternative arrangements as listed in section 11.2 of the Guidelines for the removal, destruction or lopping of native vegetation.

These potential sites are not yet available, land owners may finalise them once a buyer is confirmed.

Credit Site ID	GHU	LT	CMA	LGA	Land owner	Trader	Fixed price	Broker(s)
VC_CFL-3832_01	3.771	235	Corangamite	Colac Otway Shire	Yes	Yes	No	VegLink

LT - Large Trees

CMA - Catchment Management Authority

LGA - Municipal District or Local Government Authority

Next steps

If applying for approval to remove native vegetation

Attach this report to an application to remove native vegetation as evidence that your offset requirement is currently available.

If you have approval to remove native vegetation

Below are the contact details for all brokers. Contact the broker(s) listed for the credit site(s) that meet your offset requirements. These are shown in the above tables. If more than one broker or site is listed, you should get more than one quote before deciding which offset to secure.

Broker contact details

Broker Abbreviation	Broker Name	Phone	Email	Website
	Fully traded			
Abezco	Abzeco Pty. Ltd.	(03) 9431 5444	offsets@abzeco.com.au	www.abzeco.com.au
Baw Baw SC	Baw Baw Shire Council	(03) 5624 2411	bawbaw@bawbawshire.vic.gov.au	www.bawbawshire.vic.gov.au
Bio Offsets	Biodiversity Offsets Victoria	0452 161 013	info@offsetsvictoria.com.au	www.offsetsvictoria.com.au
Contact NVOR	Native Vegetation Offset Register	136 186	nativevegetation.offsetregister@deeca.vic.gov.au	www.environment.vic.gov.au/native-vegetation
Ecocentric	Ecocentric Environmental Consulting	0410 564 139	ecocentric@me.com	Not available
Ethos	Ethos NRM Pty Ltd	(03) 5153 0037	offsets@ethosnrm.com.au	www.ethosnrm.com.au
IDES	ID Ecological Management	(03) 9437 0555		www.idecological.com.au
Nillumbik SC	Nillumbik Shire Council	(03) 9433 3316	offsets@nillumbik.vic.gov.au	www.nillumbik.vic.gov.au
TFN	Trust for Nature	8631 5888	offsets@tfn.org.au	www.trustfornature.org.au
VegLink	Vegetation Link Pty Ltd	(03) 8578 4250 or 1300 834 546	offsets@vegetationlink.com.au	www.vegetationlink.com.au
Yarra Ranges SC	Yarra Ranges Shire Council	1300 368 333	biodiversityoffsets@yarraranges.vic.gov.au	www.yarraranges.vic.gov.au

© The State of Victoria Department of Energy, Environment and Climate Action 2026



This work is licensed under a Creative Commons Attribution 4.0 International licence. You are free to re-use the work under that licence, on the condition that you

credit the State of Victoria as author. The licence does not apply to any images, photographs or branding, including the Victorian Coat of Arms, the Victorian Government logo and the Department of Energy, Environment and Climate Action (DEECA) logo. To view a copy of this licence, visit <http://creativecommons.org/licenses/by/4.0/>

For more information contact the DEECA Customer Service Centre 136 186 or the Native Vegetation Credit Register at nativevegetation.offsetregister@delwp.vic.gov.au

Disclaimer

This publication may be of assistance to you but the State of Victoria and its employees do not guarantee that the publication is without flaw of any kind or is wholly appropriate for your particular purposes and therefore disclaims all liability for any error, loss or other consequence which may arise from you relying on any information in this publication.

Obtaining this publication does not guarantee that the credits shown will be available in the Native Vegetation Credit Register either now or at a later time when a purchase of native vegetation credits is planned.

Notwithstanding anything else contained in this publication, you must ensure that you comply with all relevant laws, legislation, awards or orders and that you obtain and comply with all permits, approvals and the like that affect, are applicable or are necessary to undertake any action to remove, lop or destroy or otherwise deal with any native vegetation or that apply to matters within the scope of Clauses 52.16 or 52.17 of the Victoria Planning Provisions and Victorian planning schemes

7 REFERENCES

DEECA Website i.

https://www.environment.vic.gov.au/_data/assets/pdf_file/0019/90523/Key-Changes-Overview.pdf

DEECA Website ii.

<https://www.environment.vic.gov.au/native-vegetation/native-vegetation>

DEECA Website iii.

<https://mapshare.vic.gov.au/nvr/map/removal>

Guidelines for the removal, destruction or lopping of native vegetation (Department of Environment, Land, Water and Planning, 2017)

DEECA Website iv.

<http://maps.biodiversity.vic.gov.au/viewer/?viewer=NatureKit>

DEECA Website v.

https://www.environment.vic.gov.au/_data/assets/pdf_file/0012/50511/Bioregional-Conservation-Status-for-each-BioEVC.pdf

Address corrected to 26 Callaway Court

DEECA Website vi.

<https://mapshare.vic.gov.au/vicplan/>

<https://planning-schemes.app.planning.vic.gov.au/Moyne/ordinance/52.37>

Oates, A. & Taranto, M. (2001): 'Vegetation mapping of the Port Phillip & Westernport region' Arthur Rylah Institute for Environmental Research, DNRE, Victoria.

Parkes, D., Newell, G. & Cheal, D. (2003): 'Assessing the quality of native vegetation: The habitat hectares approach. Parks, Flora & Fauna Division, DNRE, Victoria.

Royal Botanic Gardens Vicflora Website i. <https://vicflora.rbg.vic.gov.au>

Walsh, N G & Entwisle, T (1994-1999): 'Flora of Victoria Vol 2-4' Inkata Press, Melbourne.

Plates 1-6 Site Photographs



Plate 1. Exotic vegetation. Typical conditions.



Address corrected to 26 Callaway Court

Plate 2. Exotic vegetation. Typical conditions.



Plate 3. Exotic and native vegetation. Typical conditions.



Plate 4. Exotic and native vegetation. Typical conditions.



Plate 5. Exotic and native vegetation. Typical conditions.



Plate 6. Exotic and planted exotic vegetation. Typical conditions.

Address corrected to 26 Callaway Court