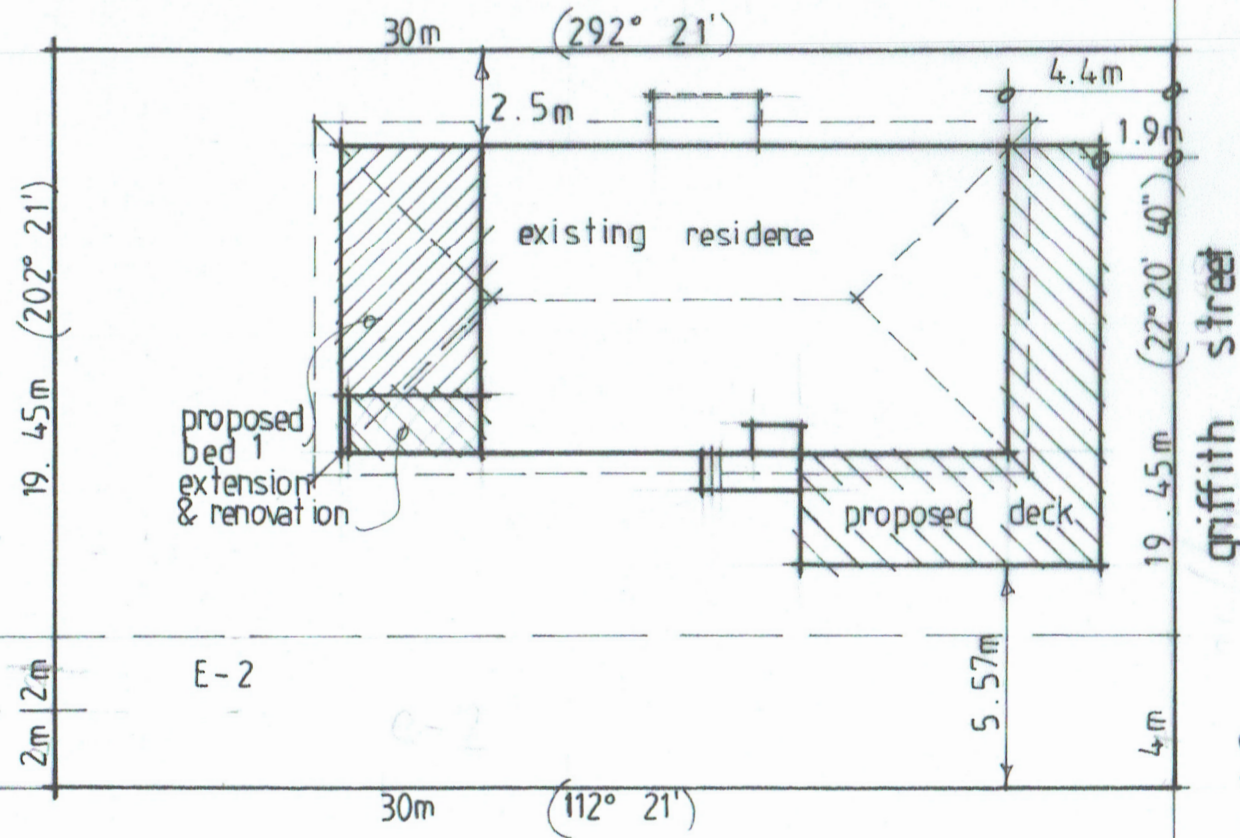
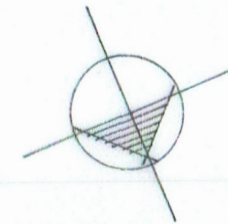


EXISTING GROUND PLAN

1:100



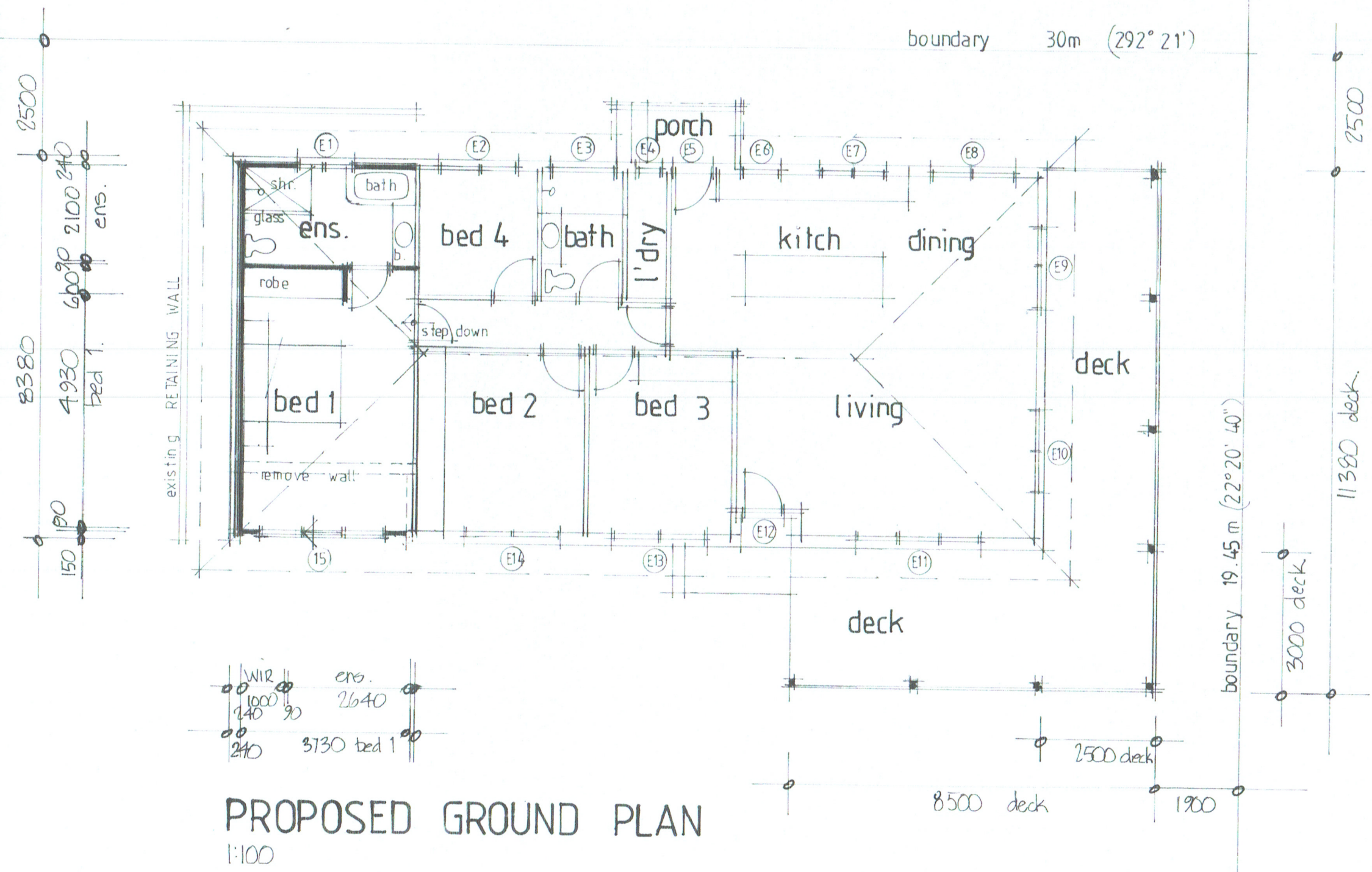
SITE PLAN
1:200

D: August 2023

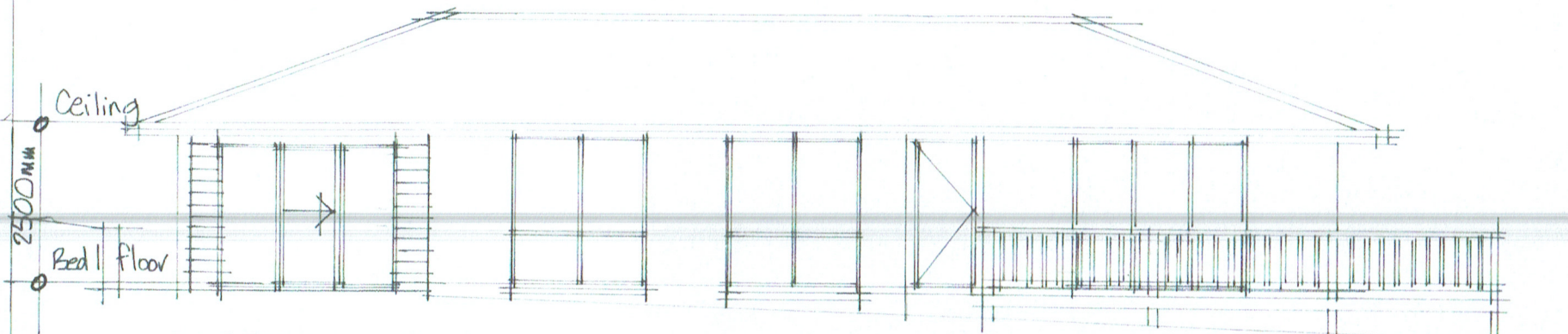
PROPOSED Renovation & Deck
AT 132 Griffith st. Port Fairy
FOR [REDACTED]

WINDOWS/DOORS Schedule:

- E1 Window - 1240mm wide x 1040mm high
- E2 Window - 1800mm wide x 1500mm high
- E3 Window - 1550mm wide x 1000mm high
- E4 Window - 600mm wide x 600mm high
- E5 Swinging Door - 850mm wide x 2100mm high
- E6 Window 900mm wide x 1000mm high
- E7 Window 1500mm wide x 1000mm wide
- E8 Window 1800mm wide x 1500mm wide
- E9 Window 1800mm wide x 2000mm high
- E10 Window 1800mm wide x 2000mm high
- E11 Window 2700mm wide x 2000mm high
- E12 Front Door - 850mm wide x 2100mm high
- E13 Window 2100mm wide x 2000mm wide
- E14 Window 2100mm wide x 2000mm wide
- 15 NEW Double glazed aluminium framed Glass SLIDING DOOR 2700mm wide x 2100mm high

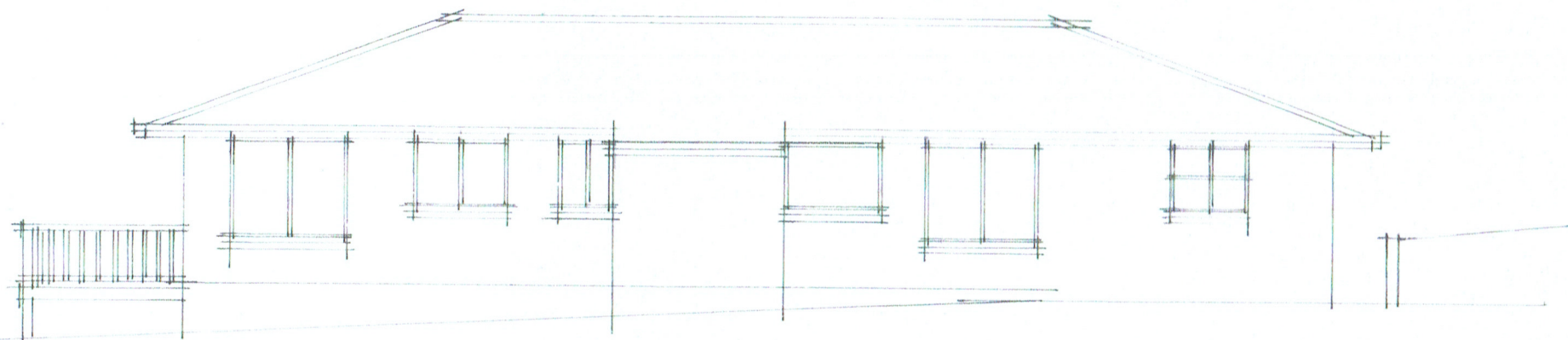


PROPOSED GROUND PLAN
1:100



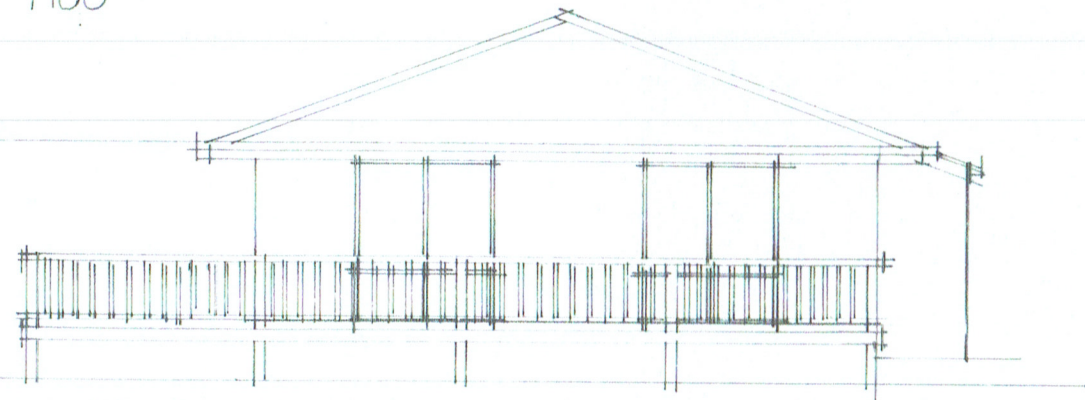
NORTH ELEVATION

1:100



SOUTH ELEVATION

1:100



WEST ELEVATION

1:100



EAST ELEVATION

1:100