

| Sheet | Name                                  | Revision |
|-------|---------------------------------------|----------|
| TP01  | COVER PAGE                            | -        |
| TP02  | EXISTING CONDITIONS & DEMOLITION PLAN | -        |
| TP03  | LOCALITY PLAN                         | -        |
| TP04  | SITE PLAN                             | -        |
| TP05  | GROUND FLOOR PLAN                     | -        |
| TP06  | NORTH & SOUTH ELEVATIONS              | -        |
| TP07  | EAST & WEST ELEVATIONS                | -        |
| TP08  | MATERIAL & FINISH SCHEDULE            | -        |
| TP09  | AREA SUMMARY                          | -        |
| TP10  | INDICATIVE 3D VIEW                    | -        |
| TP11  | INDICATIVE 3D VIEW                    | -        |
| TP12  | INDICATIVE 3D VIEW                    | -        |



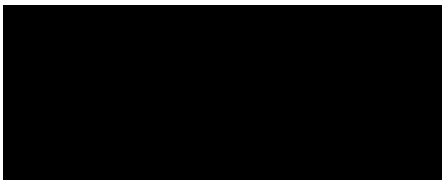
TITLE

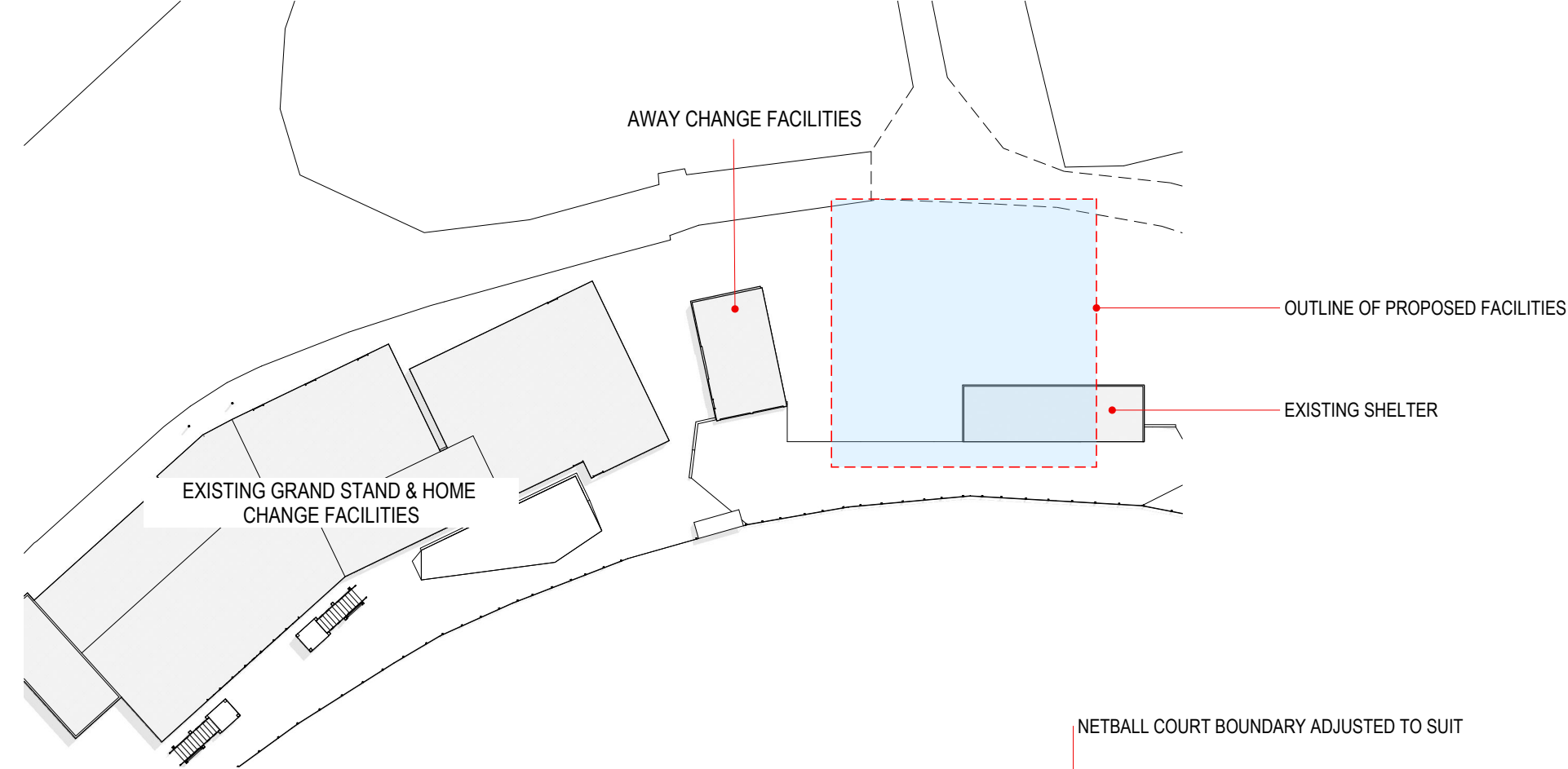
# CONSTRUCTION DOCUMENTATION

PROJECT

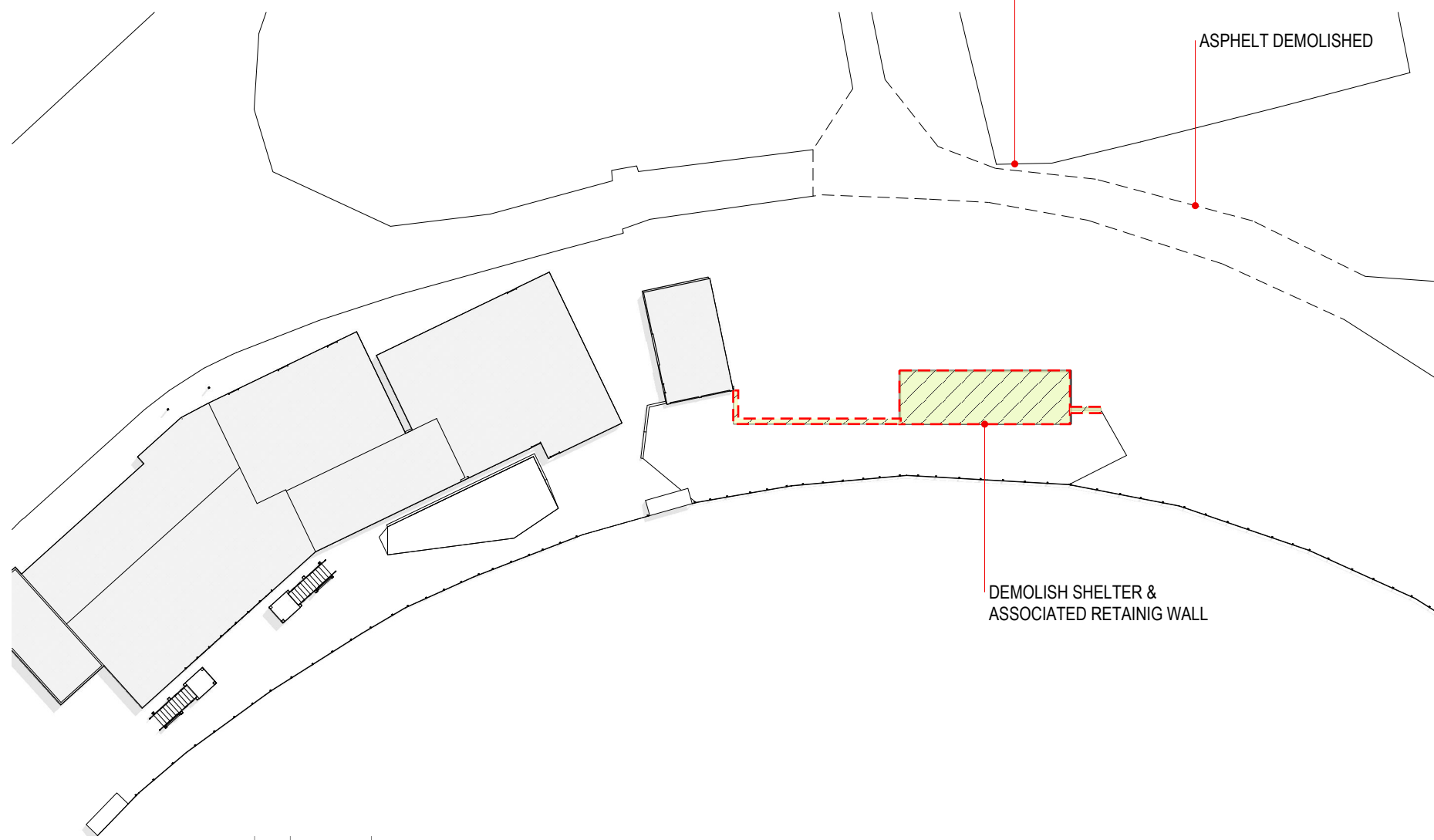
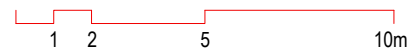
Port Fairy Football Netball Club  
The Gardens Oval, Port Fairy

DATE: 08-Jan-24      PROJECT No.: 2215  
SHEET: A3              DRAWING: TP01

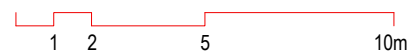




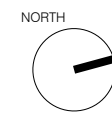
EXISTING CONDITIONS  
SCALE 1:500



DEMOLITION PLAN  
SCALE 1:500



| REV. | DATE      | DESCRIPTION       |
|------|-----------|-------------------|
| -    | 08-Jan-24 | Preliminary Issue |

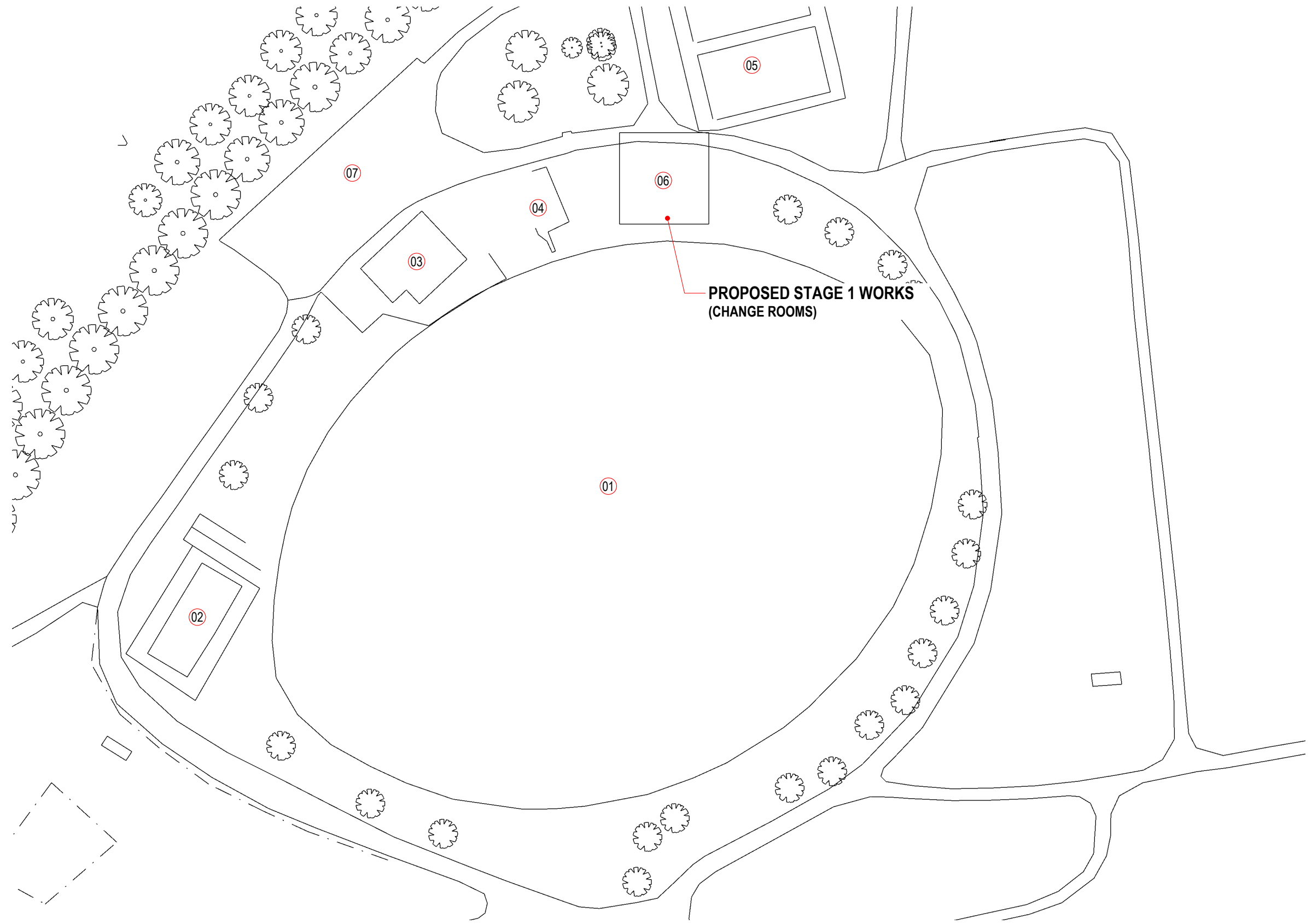


PROJECT  
Port Fairy Football Netball Club  
The Gardens Oval, Port Fairy

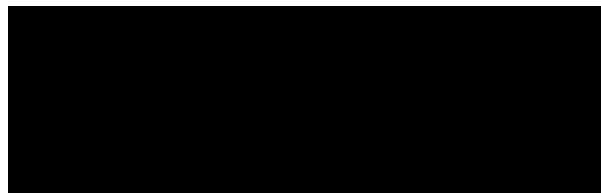
DRAWING TITLE  
**EXISTING CONDITIONS &  
DEMOLITION PLAN**

|             |           |             |
|-------------|-----------|-------------|
| SHEET       | SCALE     | REVISION    |
| A3          | 1:500     | -           |
| PROJECT No. | DATE      | DRAWING     |
| 2215        | 08-Jan-24 | <b>TP02</b> |

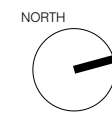
- 01 GARDENS OVAL
- 02 EXISTING SPORTS COURT
- 03 EXISTING GRANDSTAND
- 04 EXISTING CHANGE FACILITY
- 05 EXISTING NETBALL COURTS
- 06 PROPOSED BUILDING
- 07 CAR PARK



LOCALITY PLAN  
SCALE 1:1000



| REV. | DATE      | DESCRIPTION       |
|------|-----------|-------------------|
| -    | 08-Jan-24 | Preliminary Issue |

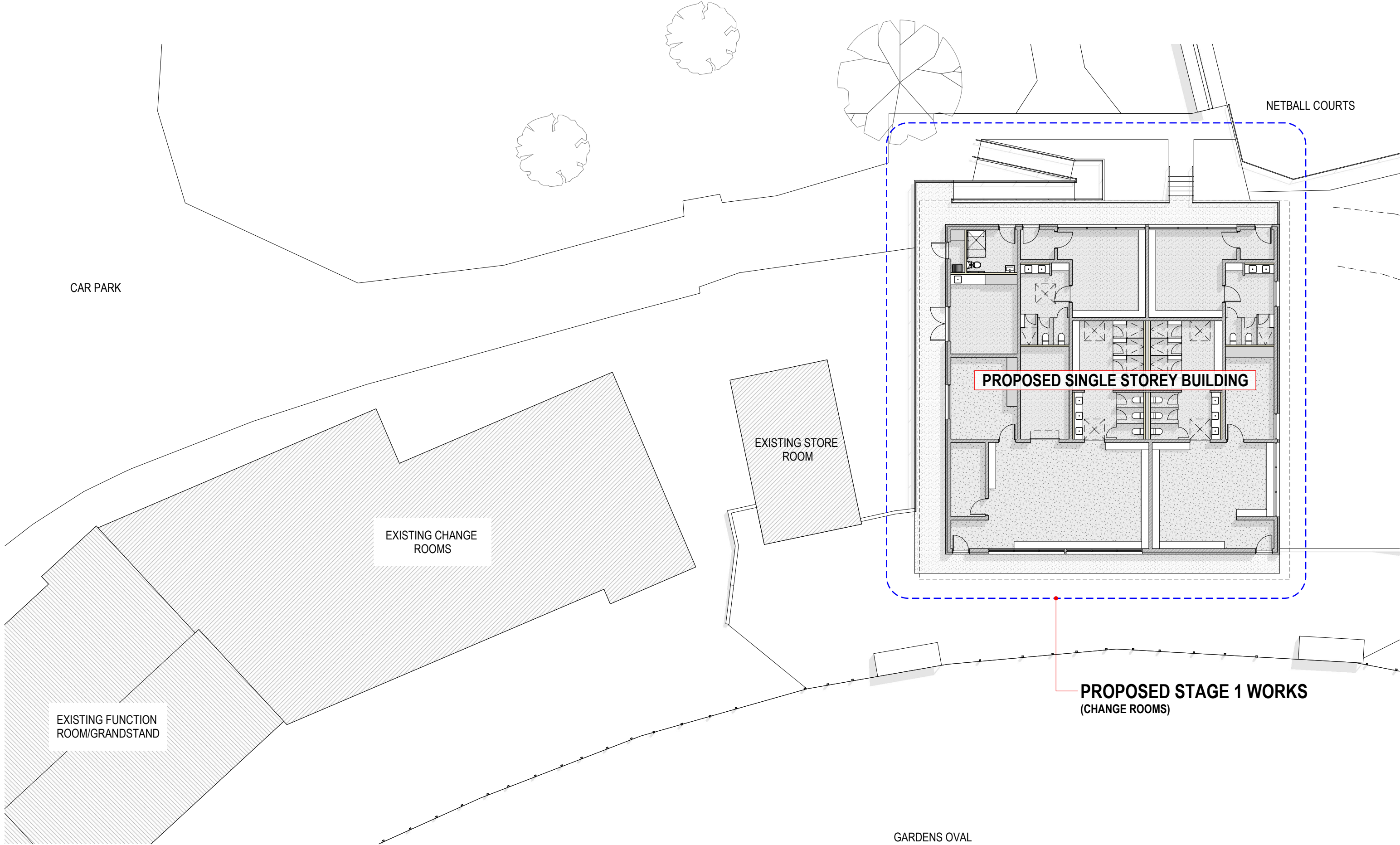


PROJECT  
Port Fairy Football Netball Club  
The Gardens Oval, Port Fairy

DRAWING TITLE  
**LOCALITY PLAN**

SHEET A3  
SCALE 1:1000  
REVISION -  
PROJECT No. 2215  
DATE 08-Jan-24  
DRAWING

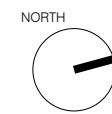
**TP03**



SITE PLAN  
SCALE 1:200



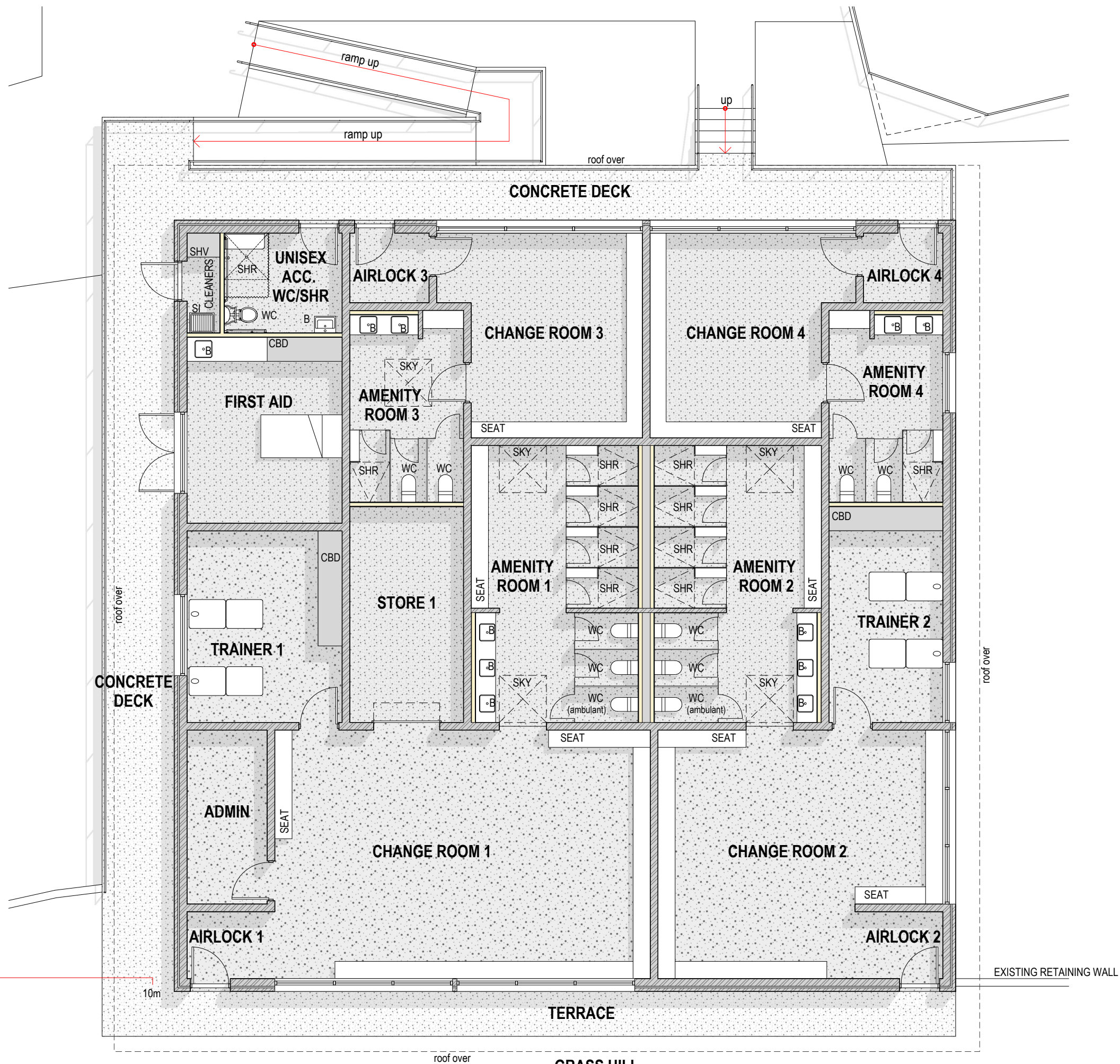
| REV. | DATE      | DESCRIPTION       |
|------|-----------|-------------------|
| -    | 08-Jan-24 | Preliminary Issue |



PROJECT  
**Port Fairy Football Netball Club**  
The Gardens Oval, Port Fairy

DRAWING TITLE  
**SITE PLAN**

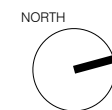
| SHEET       | SCALE     | REVISION    |
|-------------|-----------|-------------|
| A3          | 1:200     | -           |
| PROJECT No. | DATE      | DRAWING     |
| 2215        | 08-Jan-24 | <b>TP04</b> |



GROUND FLOOR PLAN  
SCALE 1:100



GRASS HILL

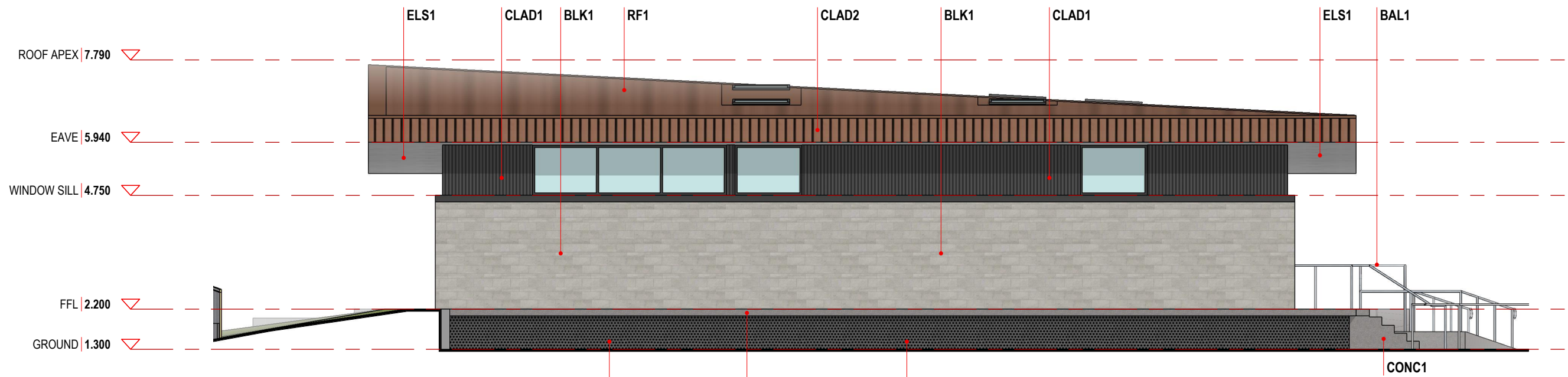


PROJECT  
Port Fairy Football Netball Club  
The Gardens Oval, Port Fairy

DRAWING TITLE  
GROUND FLOOR PLAN

| REV. | DATE      | DESCRIPTION       |
|------|-----------|-------------------|
| -    | 08-Jan-24 | Preliminary Issue |

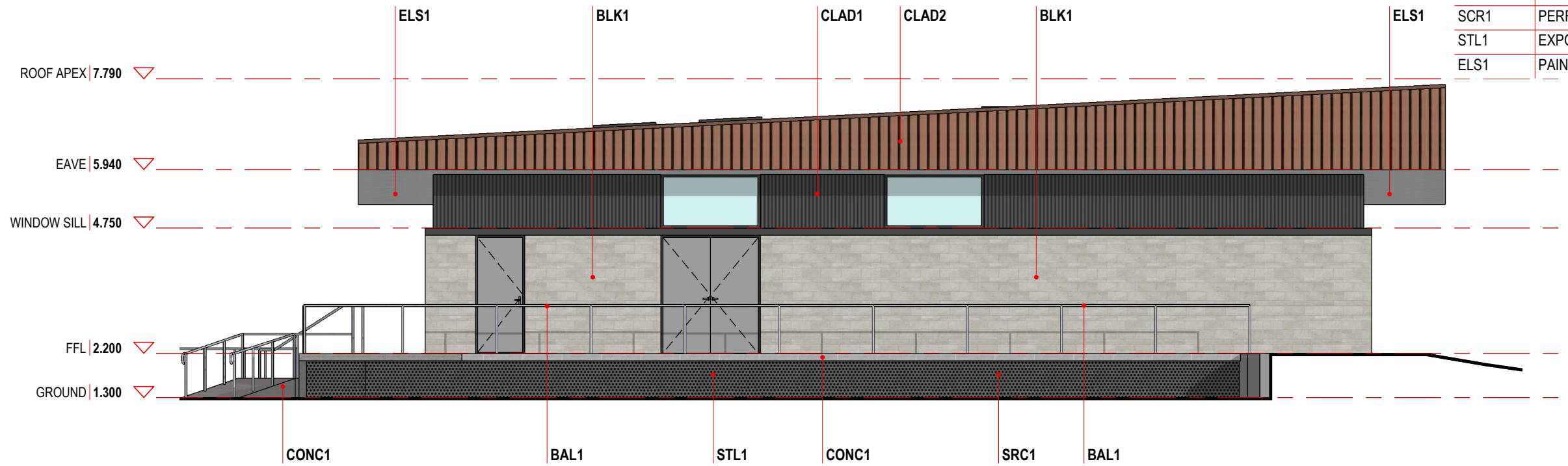
| SHEET       | SCALE     | REVISION    |
|-------------|-----------|-------------|
| A3          | 1:100     | -           |
| PROJECT No. | DATE      | DRAWING     |
| 2215        | 08-Jan-24 | <b>TP05</b> |



**NORTH ELEVATION**  
SCALE 1:100

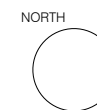
**LEGEND - ELEVATIONS**

| CODE  | DESCRIPTION                             |
|-------|---|
| BAL1  | GALVANISED STEEL BALUSTRADE             |
| BLK1  | HONED CONCRETE BLOCKWORK                |
| CLAD1 | CUSTOM ORB COLORBOND STEEL PROFILE      |
| CLAD2 | DOMINION COLORBOND STEEL PROFILE        |
| RF1   | TRAY DECK COLORBOND STEEL ROOF SHEETING |
| CONC1 | CONCRETE SLAB EDGE/STAIRS               |
| SCR1  | PERFORATED METAL SHEET IN-FILL          |
| STL1  | EXPOSED STEEL COLUMNS                   |
| ELS1  | PAINTED CEMENT SHEET EAVES              |



**SOUTH ELEVATION**  
SCALE 1:100

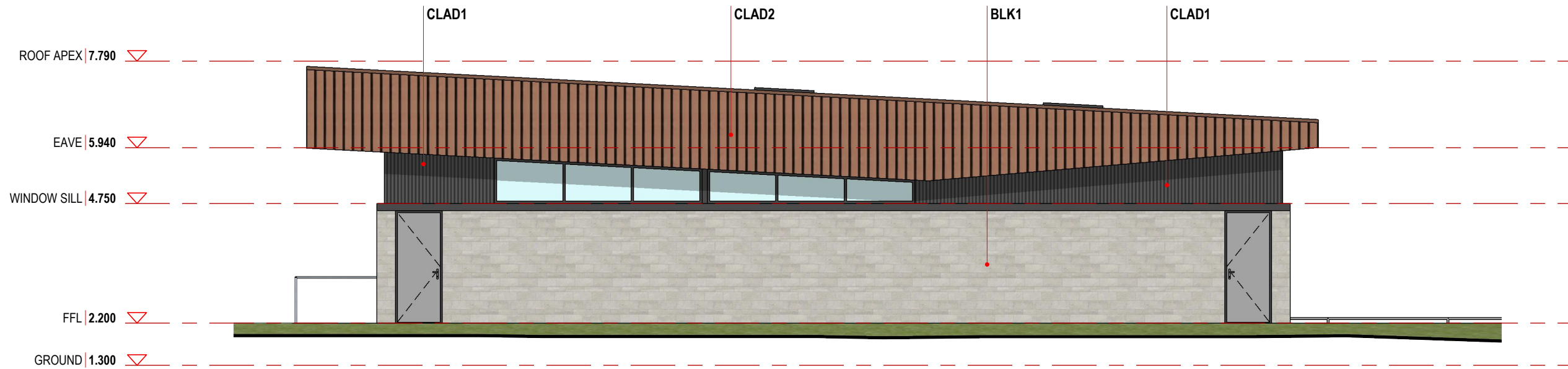
| REV. | DATE      | DESCRIPTION       |
|------|-----------|-------------------|
| -    | 08-Jan-24 | Preliminary Issue |



PROJECT  
Port Fairy Football Netball Club  
The Gardens Oval, Port Fairy

DRAWING TITLE  
**NORTH & SOUTH ELEVATIONS**

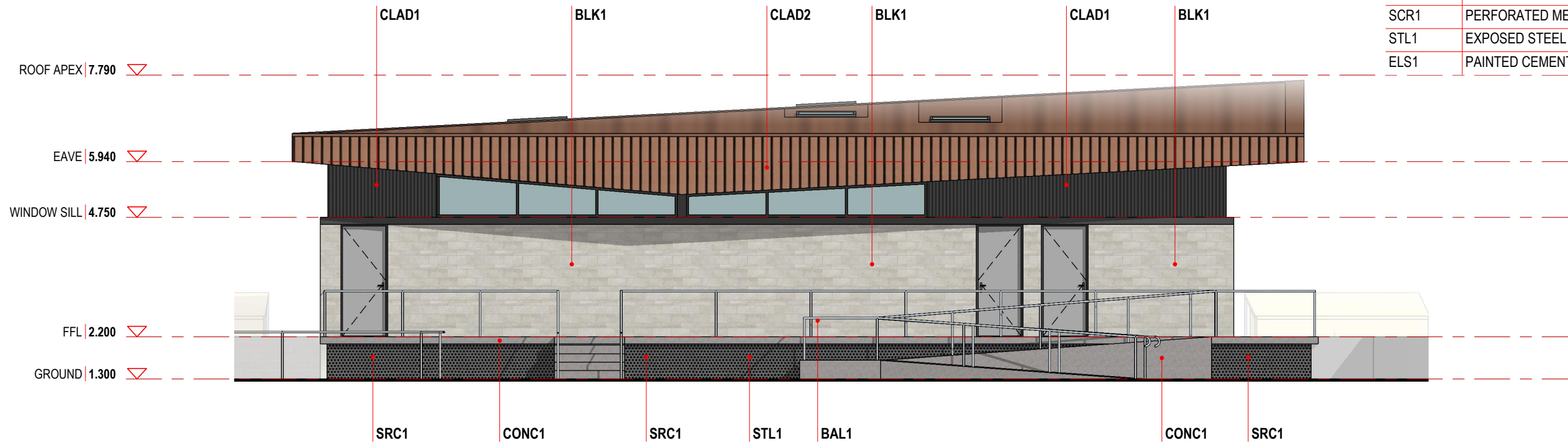
SHEET A3  
SCALE 1:100  
PROJECT No. 2215  
DATE 08-Jan-24  
REVISION -  
DRAWING **TP06**



**EAST ELEVATION**  
SCALE 1:100

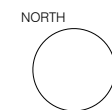
**LEGEND - ELEVATIONS**

| CODE  | DESCRIPTION                             |
|-------|---|
| BAL1  | GALVANISED STEEL BALUSTRADE             |
| BLK1  | HONED CONCRETE BLOCKWORK                |
| CLAD1 | CUSTOM ORB COLORBOND STEEL PROFILE      |
| CLAD2 | DOMINION COLORBOND STEEL PROFILE        |
| RF1   | TRAY DECK COLORBOND STEEL ROOF SHEETING |
| CONC1 | CONCRETE SLAB EDGE/STAIRS               |
| SCR1  | PERFORATED METAL SHEET IN-FILL          |
| STL1  | EXPOSED STEEL COLUMNS                   |
| ELS1  | PAINTED CEMENT SHEET EAVES              |



**WEST ELEVATION**  
SCALE 1:100

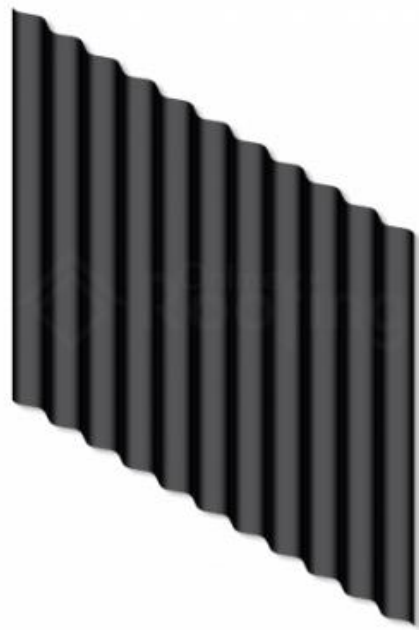
| REV. | DATE      | DESCRIPTION       |
|------|-----------|-------------------|
| -    | 08-Jan-24 | Preliminary Issue |



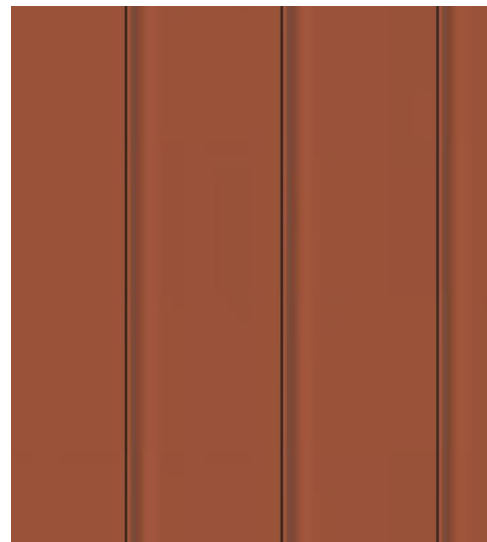
PROJECT  
Port Fairy Football Netball Club  
The Gardens Oval, Port Fairy

DRAWING TITLE  
**EAST & WEST ELEVATIONS**

SHEET A3  
SCALE 1:100  
PROJECT No. 2215  
DATE 08-Jan-24  
REVISION -  
DRAWING **TP07**



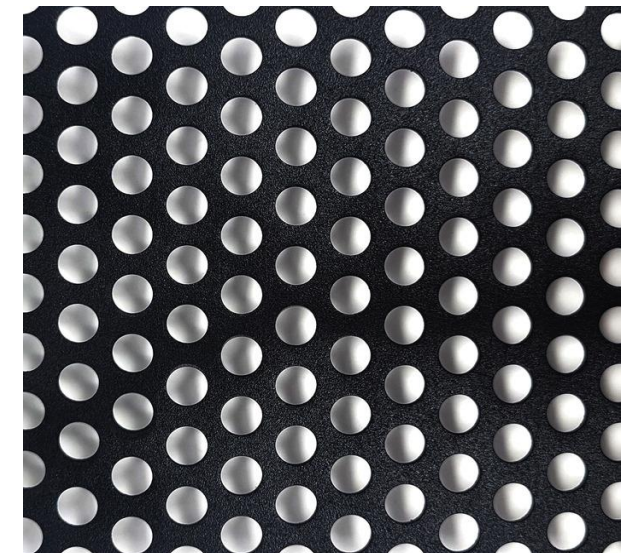
CLAD1  
Corrugated walling, Custom Orb  
profile. Colourbond ' Monument'



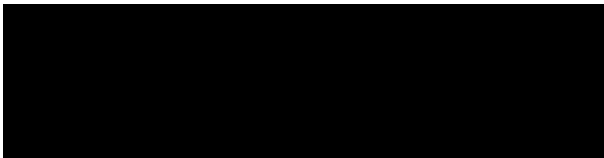
CLAD2  
Lysaght Dominion. Colourbond ' Aries'



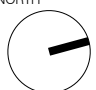
BLK1  
Adbri Masonry Besser block. Smooth  
Stone range 'Ivory' Laid in repeating  
pattern.



SCR1  
Perforated metal sheet infill. Powder  
coated ' Monument'



| REV. | DATE      | DESCRIPTION       |
|------|-----------|-------------------|
| -    | 08-Jan-24 | Preliminary Issue |

NORTH 

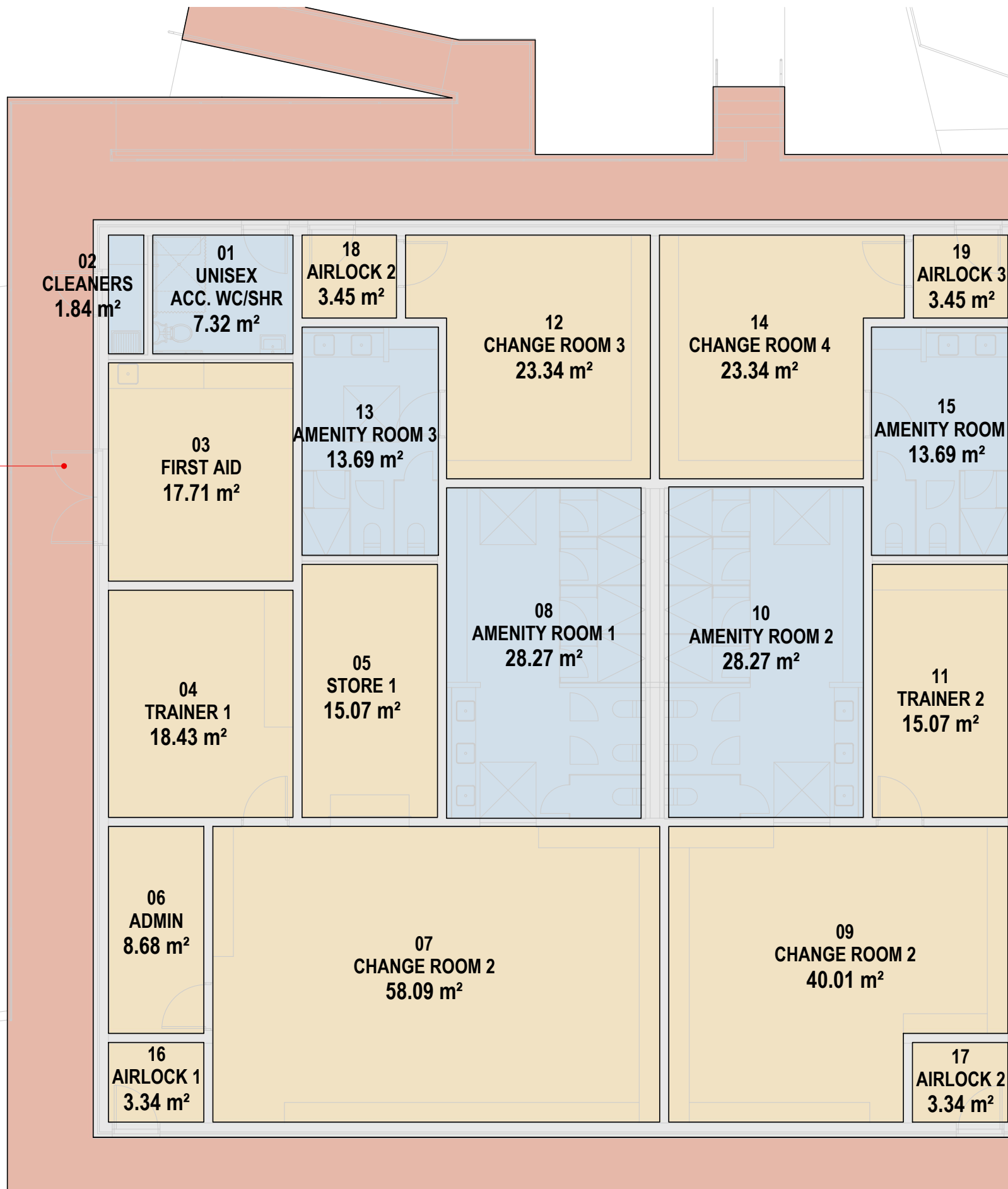
PROJECT  
**Port Fairy Football Netball Club**  
The Gardens Oval, Port Fairy

DRAWING TITLE  
**MATERIALS & FINISH SCHEDULE**

| SHEET       | SCALE     | REVISION    |
|-------------|-----------|-------------|
| A3          |           |             |
| PROJECT No. | DATE      | DRAWING     |
| 2215        | 08-Jan-24 | <b>TP08</b> |



RAMPS, STEPS,  
LANDINGS, TERRACE  
111.99 m<sup>2</sup>



**AREA SUMMARY**

|                       | m2            |
|-----------------------|---------------|
| 01 UNISEX ACC. WC/SHR | 7.32          |
| 02 CLEANERS           | 1.84          |
| 03 FIRST AID          | 17.71         |
| 04 TRAINER 1          | 16.56         |
| 05 STORE 1            | 15.07         |
| 06 ADMIN              | 8.68          |
| 07 CHANGE ROOM 1      | 58.09         |
| 08 AMENITY ROOM 1     | 28.27         |
| 09 CHANGE ROOM 2      | 40.01         |
| 10 AMENITY ROOM 2     | 28.27         |
| 11 TRAINER 2          | 15.07         |
| 12 CHANGE ROOM 3      | 23.34         |
| 13 AMENITY ROOM 3     | 13.69         |
| 14 CHANGE ROOM 4      | 23.34         |
| 15 AMENITY ROOM 4     | 13.69         |
| 16 AIRLOCK 1          | 3.34          |
| 17 AIRLOCK 2          | 3.34          |
| 18 AIRLOCK 3          | 3.45          |
| 19 AIRLOCK 4          | 3.45          |
| <b>TOTAL</b>          | <b>324.53</b> |

**BUILDING FOOTPRINT**

375.18 m<sup>2</sup>  
(measure to outside face of walls)

AREA SUMMARY  
SCALE 1:100

| REV. | DATE      | DESCRIPTION       |
|------|-----------|-------------------|
| -    | 08-Jan-24 | Preliminary Issue |



PROJECT  
Port Fairy Football Netball Club  
The Gardens Oval, Port Fairy

DRAWING TITLE  
**AREA SUMMARY**

SHEET  
A3

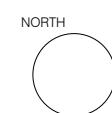
SCALE  
1:100

REVISION  
-

PROJECT No. DATE DRAWING  
2215 08-Jan-24 **TP09**



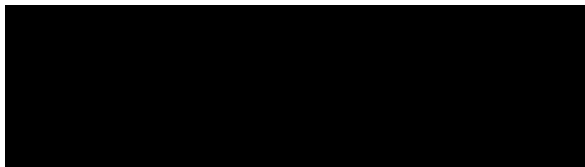
| REV. | DATE      | DESCRIPTION       |
|------|-----------|-------------------|
| -    | 08-Jan-24 | Preliminary Issue |



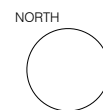
PROJECT  
**Port Fairy Football Netball Club**  
 The Gardens Oval, Port Fairy

DRAWING TITLE  
**INDICATIVE 3D VIEW**

| SHEET       | SCALE     | REVISION    |
|-------------|-----------|-------------|
| A3          | NA        | -           |
| PROJECT No. | DATE      | DRAWING     |
| 2215        | 08-Jan-24 | <b>TP10</b> |



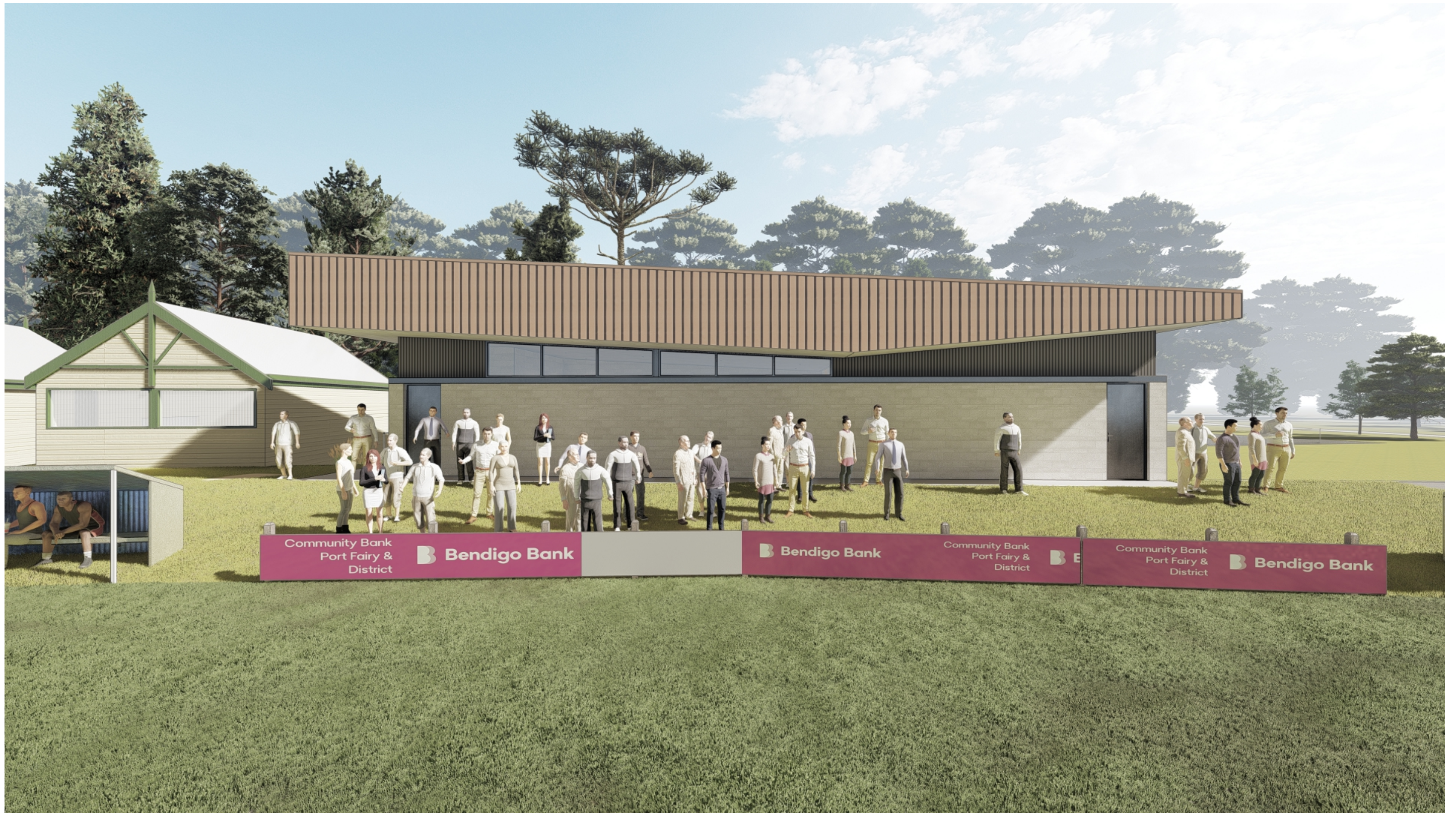
| REV. | DATE      | DESCRIPTION       |
|------|-----------|-------------------|
| -    | 08-Jan-24 | Preliminary Issue |



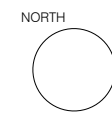
PROJECT  
**Port Fairy Football Netball Club**  
 The Gardens Oval, Port Fairy

DRAWING TITLE  
**INDICATIVE 3D VIEW**

|             |           |             |
|-------------|-----------|-------------|
| SHEET       | SCALE     | REVISION    |
| A3          | NA        | -           |
| PROJECT No. | DATE      | DRAWING     |
| 2215        | 08-Jan-24 | <b>TP11</b> |



| REV. | DATE      | DESCRIPTION       |
|------|-----------|-------------------|
| -    | 08-Jan-24 | Preliminary Issue |



PROJECT  
**Port Fairy Football Netball Club**  
 The Gardens Oval, Port Fairy

DRAWING TITLE  
**INDICATIVE 3D VIEW**

|             |           |             |
|-------------|-----------|-------------|
| SHEET       | SCALE     | REVISION    |
| A3          | NA        | -           |
| PROJECT No. | DATE      | DRAWING     |
| 2215        | 08-Jan-24 | <b>TP12</b> |