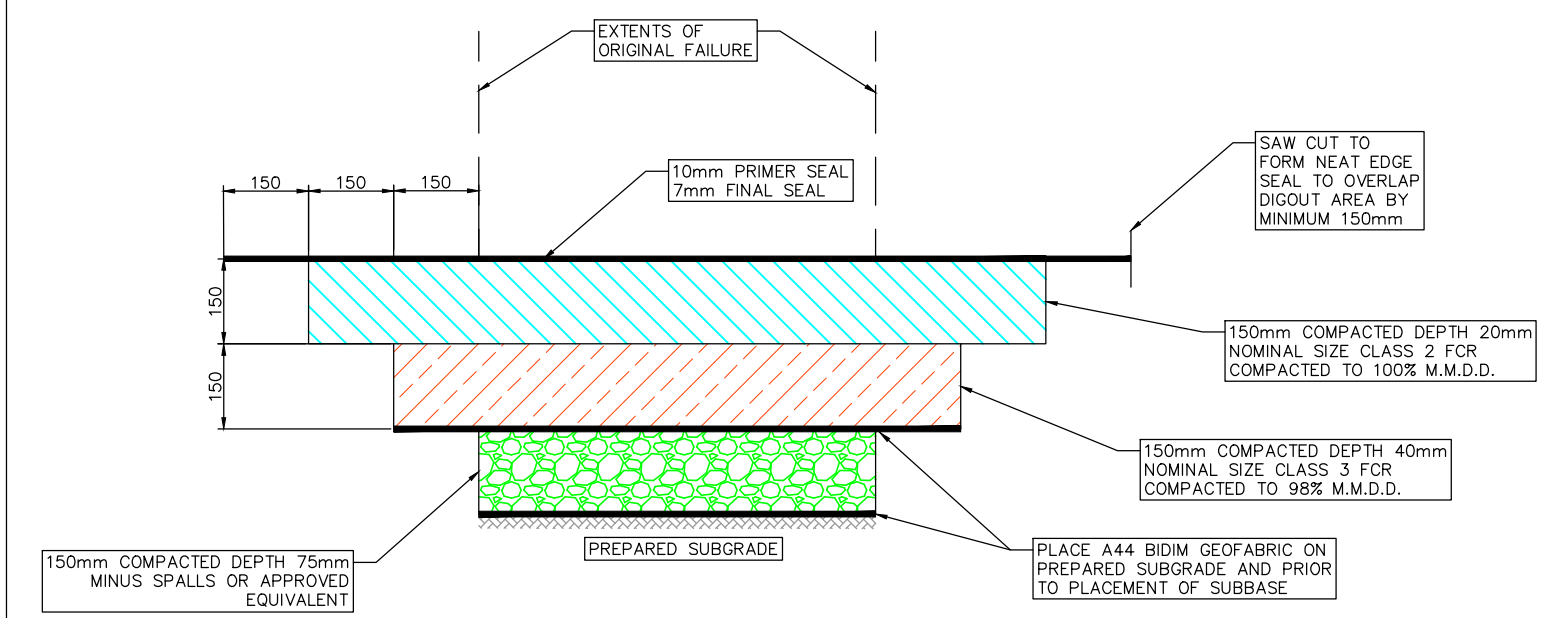
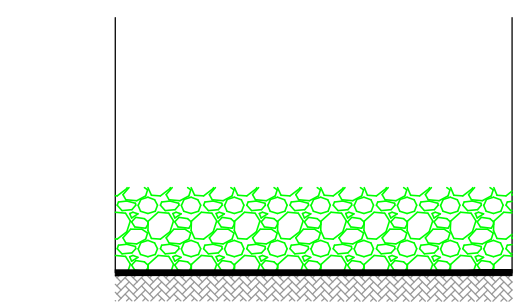


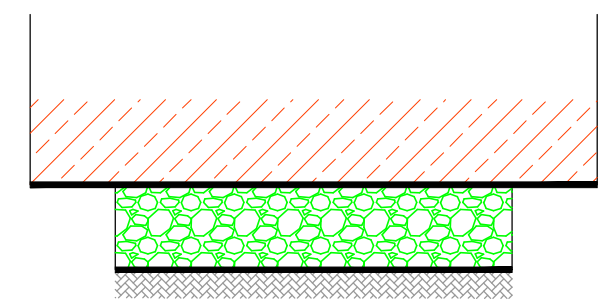
TYPICAL DETAIL
MAINTENANCE DIGOUTS FOR ACCESS ROADS
N.T.S



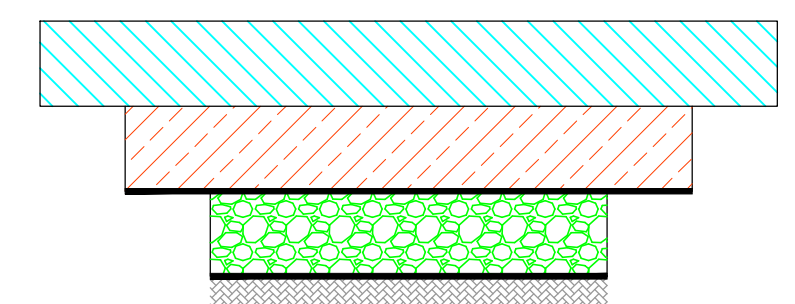
TYPICAL DETAIL
MAINTENANCE DIGOUTS FOR LINK AND
COLLECTOR ROADS
N.T.S



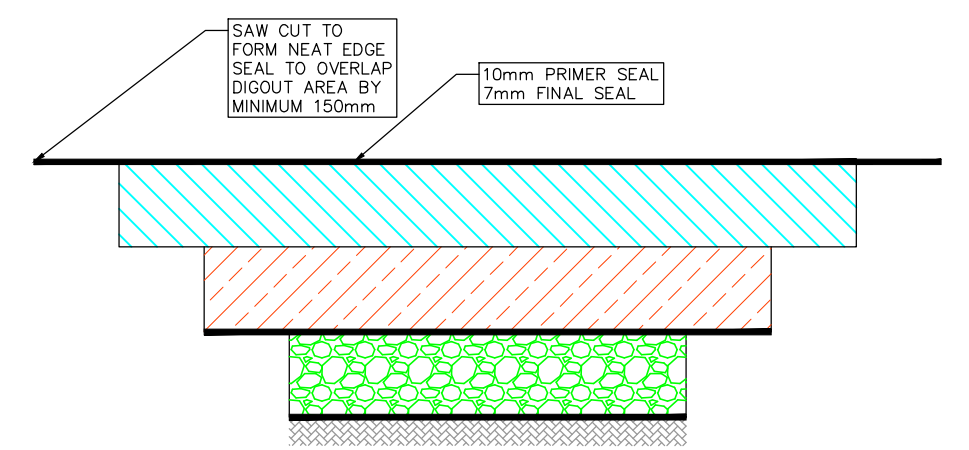
STEP 1 – PLACE AND COMPACT 75mm MINUS SPALLS
ON GEOFABRIC



STEP 2 – PLACE GEOFABRIC OVER SPALLS, ENSURE OVERLAP WHERE REQUIRED
PLACE AND COMPACT SUBBASE AS DETAILED



STEP 3 – PLACE AND COMPACT BASE COURSE AS DETAILED



STEP 4 – SAW CUT AND SEAL
PLACE 2 COAT SEAL ENSURING 150mm OVERLAP BETWEEN COATS

NOT TO SCALE

SCALE @ A3

REV	DATE	BY	APP	REVISION DESCRIPTION
A	08/02/2022	DS	AO	APPROVED FOR USE

PROJECT:
**MOYNE SHIRE COUNCIL
STANDARD DETAILS**

PROJECT No.:

DWG NO : **MSC-048**

TITLE :
**TYPICAL DETAIL -
MAINTENANCE DIGOUTS**

REV: **A**