

macarthur precinct plan

MASTERPLAN PRESENTATION

REV B





Features

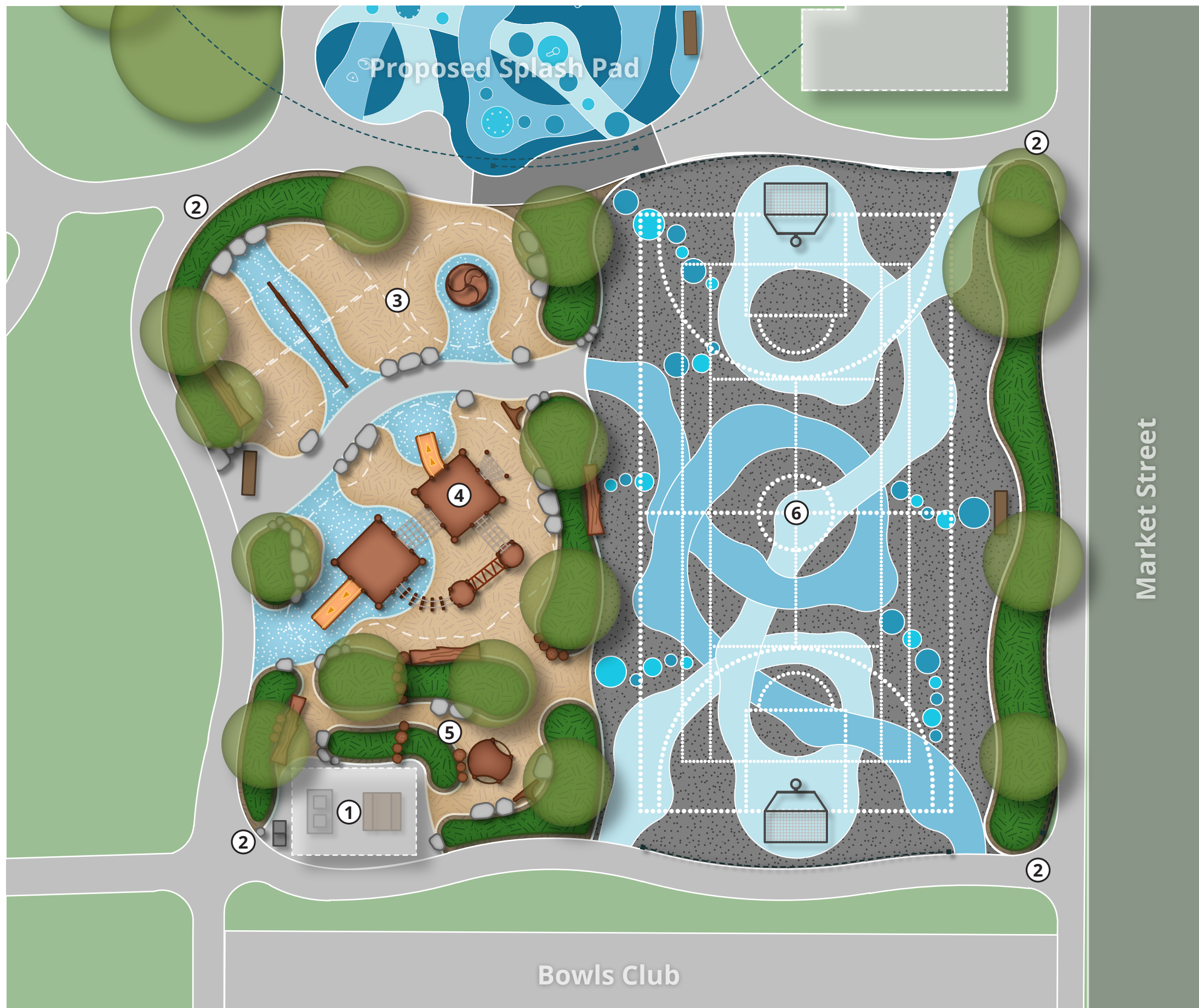
- ① **Community Space**
Shelter/BBQ/Seats with access both to pool and to sensory garden/ cultural space
- ② **Pool Lawn**
- ③ **Splash Pad**
Features activated reticulated-water with playful push buttons for water jets and managed access from playspace for the community
- ④ **Cultural Trail**
Signs / plaques explaining the local history and prominent figures
- ⑤ **Parallel Parking**
On High Street for visitors and long vehicles
- ⑥ **Multi-Age Play**
With access to toilets / multi-sport court/ picnic area. Buffer planting to control children's access to high street interface
- ⑦ **Public Toilets**
- ⑧ **Seating / Picnic /BBQ**
- ⑨ **New Bowls Club Amenities**
- ⑩ **Seating to edge of Bowls Green**
- ⑪ **Retained Memorial Garden**
- ⑫ **Cultural Space and Sensory Garden**
Designed in conjunction with indigenous groups, with interpretive signage explaining local heritage
- ⑬ **Retained Pump and Tank**
- ⑭ **Investigate Traffic Option on Market Street**
 1. Retain existing
 2. Retain existing traffic flow and re-define parking on western side as short-term during business hours
 3. Retain existing traffic flow and remove all parking on western side
 4. Convert to one way with occasional angled parking on west, allowing for large vehicle movements
 5. Convert to one way with angled parking on the east, allowing for large vehicle movements.
- ⑮ **Optional Multi-Use Hardcourt**
- ⑯ **Potential for Future Building Extensions**
- ⑰ **All Abilities access ramp connecting to carpark**

Macarthur Market Street Masterplan

Masterplan Design
September 2021 - Draft

1:1500@A3





Playspace Description

Playspace made up of flowing shapes with paths and softfall rubber elements representing the estuaries/pools of Lake Condah. Softfall mulch and garden bed areas create landforms with rocks and log steppers dividing areas to echo the Eel traps from the Budj Bim Cultural heritage. Play elements to have natural styling to Complement the surrounding network.

Features

- ① **Social Area**
With shelter, picnic table, BBQ, and bin.
- ② **Path Network**
Concrete paths surrounding the playspace, creating links Between High Street, Market Street, and other amenities on site as well as access to key play equipment.
- ③ **Swings & Spinner**
Swings with toddler and inclusive high back seats. A social Spinner for all abilities.
- ④ **Adventure Play Unit**
A network of play items including high points, slides, climbing nets, bars, and steppers located in the Centre of the playspace.
- ⑤ **Sensory Trail and Cubby**
Sensory trail through garden beds with rock and log steppers providing various paths to explore through the space. Voice tubes styled to represent Eel traps are found along the trail, with a play cubby that references the Budj Bim cultural Heritage.
- ⑥ **Optional Multi-Sport Hardcourt**
Asphalt court including tennis, basketball, and futsal markings and goals. Fencing to the north, south, and east along Market Street. Court divided into flowing shapes painted in a series of blue tones to represent Lake Condah.

Legend

Concrete Path		Rocks	
Asphalt Court		Logs	
Softfall Mulch		Tree	
Softfall Rubber		Play Elements	
Garden Bed		Furniture	
Multi-Sport Court		Shelter	
Multi-Sport Goal		Fence	

Macarthur Market Street Playspace

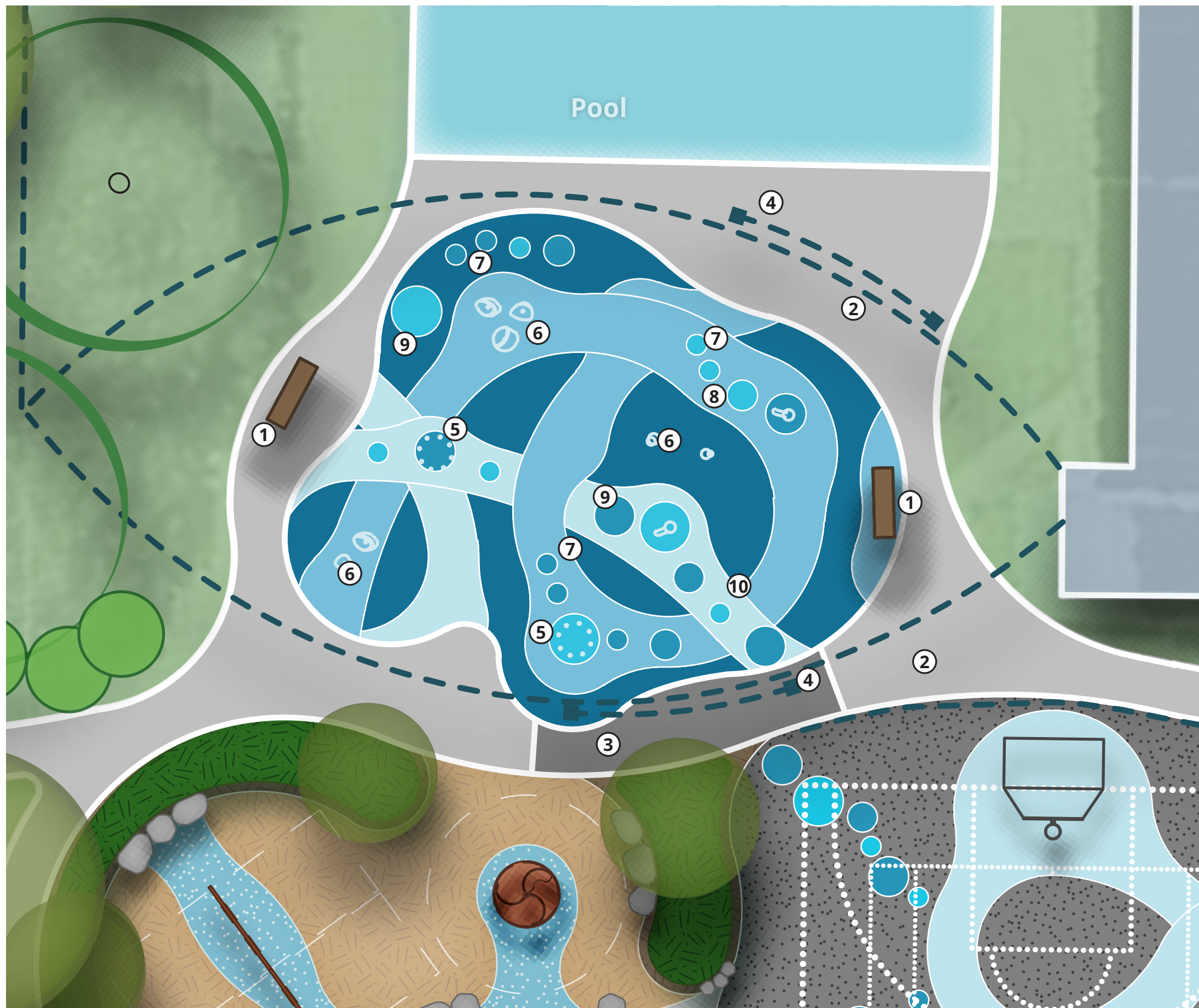
Schematic Design - Masterplan

September 2021 - Draft

0m 2m 4m 6m 10m
1:200m



PLA'CE



Features

- ① **Social Seat**
- ② **Path Connection**
Through from Swimming Pool to Playspace
- ③ **Grated Boardwalk Path**
To catch mulch/ dirt debris when coming from playspace to Splash Pad
- ④ **Fencing with Access gates**
Fence on either side of Splash Pad allowing access from Pool side and community playspace side, allowing controlled access as required.
- ⑤ **Water Jets**
- ⑥ **Feature Spray Boulders**
- ⑦ **Playful Water Sculptures**
- ⑧ **Natural Elements within Water Play**
- ⑨ **Touch Activation / Water Cannons**
- ⑩ **No-slip Surface Pattern**
Flowing shapes painted in a series of blue tones to represent Lake Condah and tie in to playspace and optional hardcourt.

Macarthur Market Street Splash Pad

Schematic Design - Masterplan
September 2021 - Draft

0m 1m 2m 3m 5m
1:100m



PLA'CE



Lake Condah estuaries & islands



Lake Condah rock traps



Eel trap



① Example Proposed Social Area



③ Example Proposed Swings



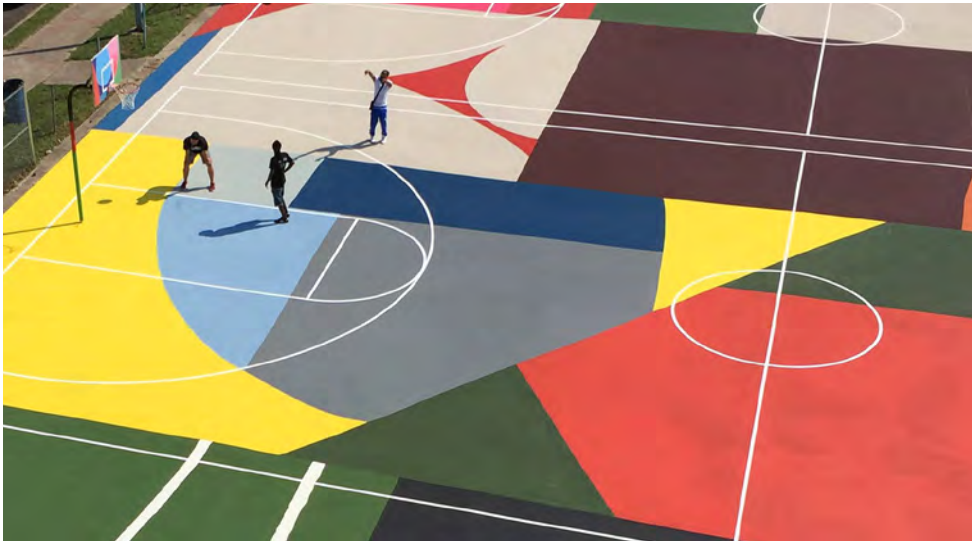
④ Example Proposed Adventure Play Unit



⑤ Example Proposed Sensory Trail and Cubby



⑤ Example Proposed Sensory Trail



⑥ Example Proposed *Optional* Multi-sport Hardcourt

Macarthur Market Street Playspace

Schematic Design - Precedent Imagery
September 2021 - Draft



⑤ Example Proposed Water Jets



⑥ Example Proposed Feature Spray Boulders



⑦ Example Proposed Playful Water Sculptures



⑧ Example Proposed Natural Elements within Water Play



⑨ Example Proposed Touch Activation/ Water Cannons



⑩ Example Proposed No-slip Surface Patterns

Macarthur Market Street Splash Pad

Schematic Design - Precedent Imagery

September 2021 - Draft



Macarthur Market Street Precinct

3D Render - View of multi-sports court
September 2021 - Draft



PLA'CE



Macarthur Market Street Precinct

3D Render - View of splash pad
September 2021 - Draft



PLA'CE



Macarthur Market Street Precinct

3D Render - Aerial view of Macarthur Precinct from pool side
September 2021 - Draft



PLA'CE



Macarthur Market Street Precinct

3D Render - View of playspace from multi-sports court

September 2021 - Draft



PLA'CE



Macarthur Market Street Precinct
3D Render - View of interface between splash pad and play space
September 2021 - Draft





Macarthur Market Street Precinct

3D Render - Aerial view of multi-sports court and play space
September 2021 - Draft



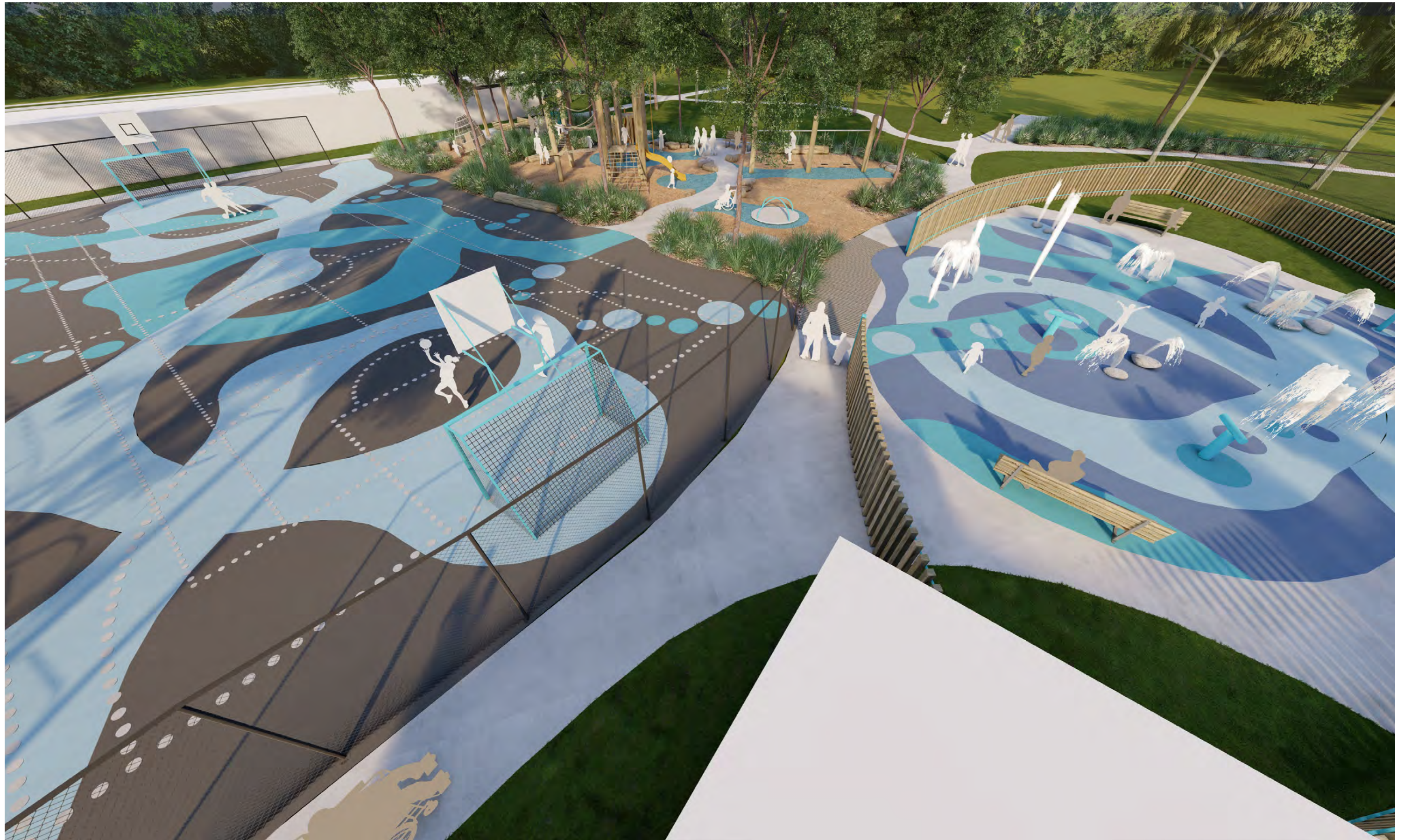
PLA'CE



Macarthur Market Street Precinct

3D Render - View of inclusive carousel, play space and multi-sports court from splash pad edge
September 2021 - Draft





Macarthur Market Street Precinct

3D Render - Aerial view of precinct
September 2021 - Draft



PLA'CE