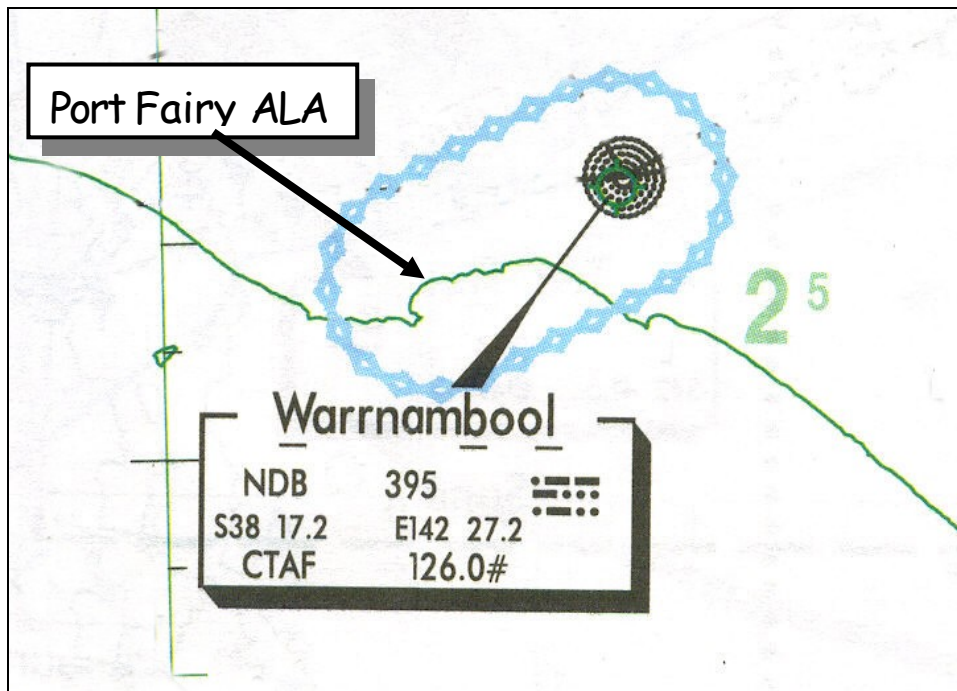
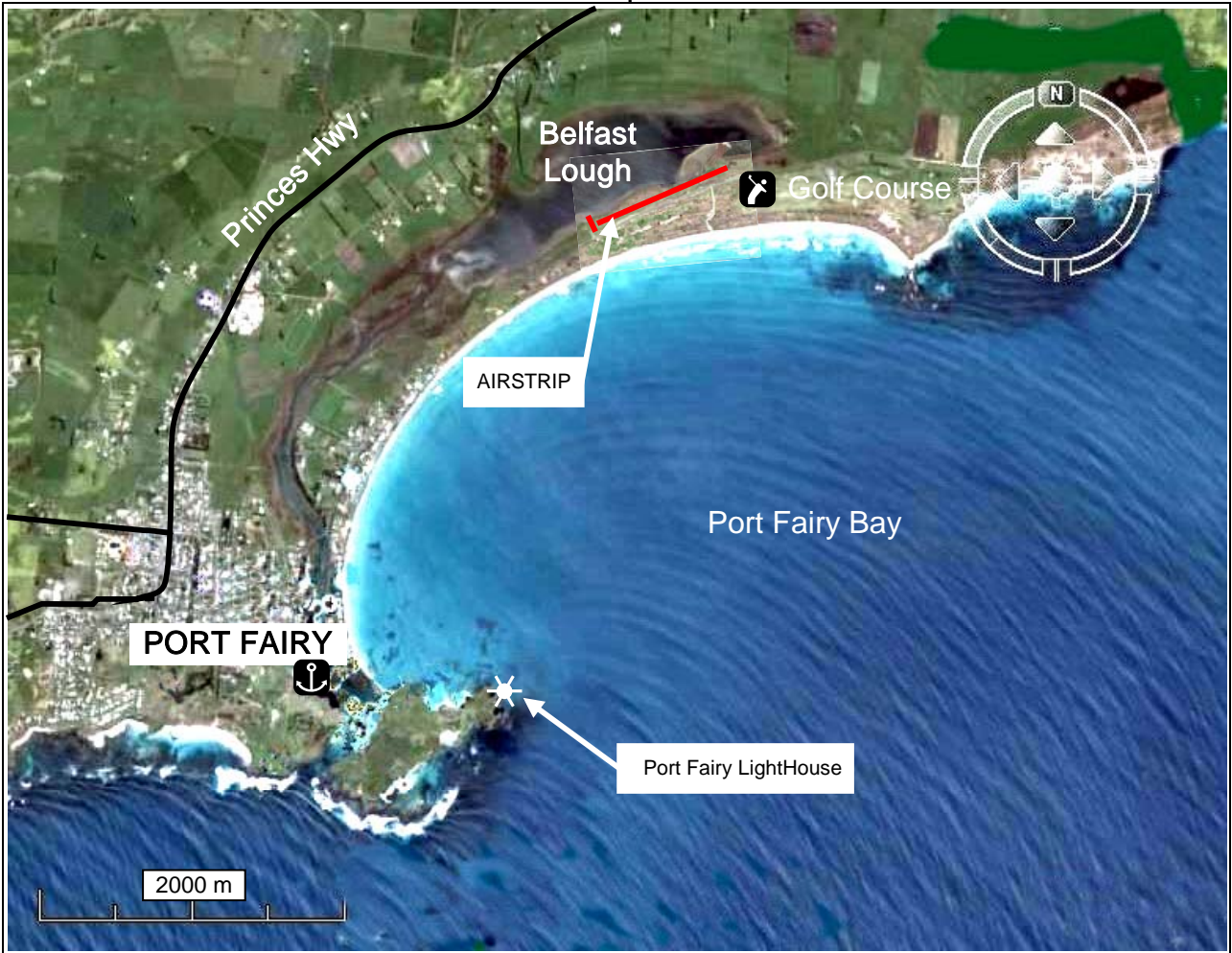


PORT FAIRY ALA

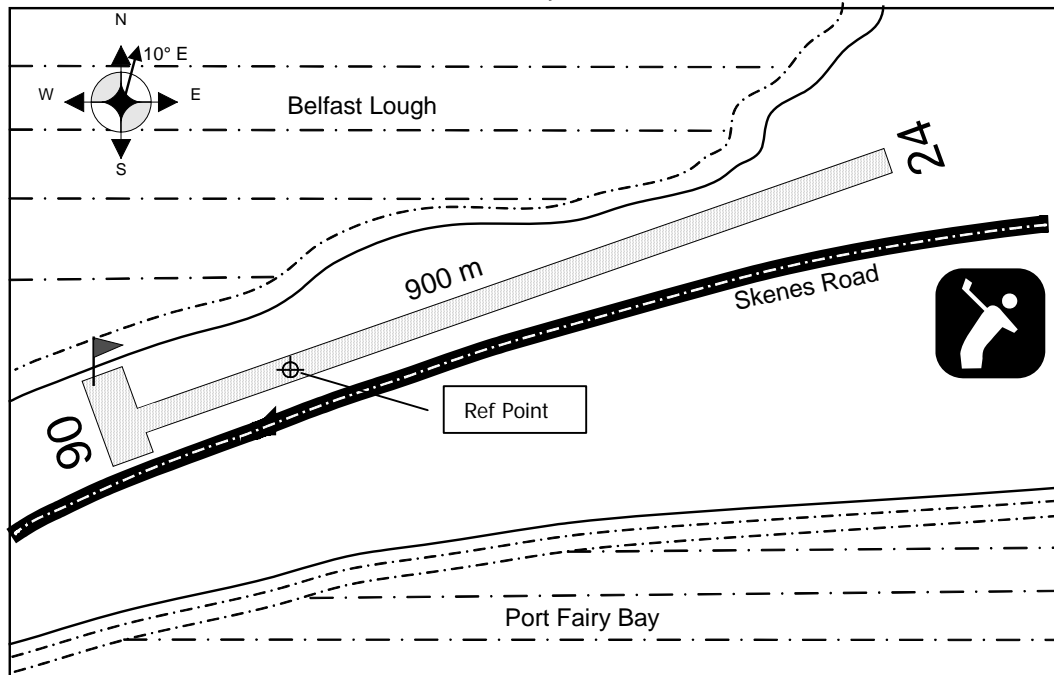
Effective April 2010



CTAF 126.0

PORT FAIRY ALA

Effective April 2010



ELEVATION 10' POSITION (GPS) 38° 21.718' S 142° 15.853' E WAC No 3469

Approx 3 Kms N.E. of Township of PORT FAIRY.

LENGTH: 900 metres RWY 06/24 (055/235) SURFACE Unsealed / Grass

CTAF 126.0 Port Fairy/Warrnambool CTAF - Circles of 5NM RAD of Port Fairy ALA and Warrnambool AD joined tangentially. SFC - 3000FT.

CAUTION **Dry weather strip only**, Bird Hazard exists, Turbulence on short final during cross wind from SE. Pilots are requested to avoid overflying historic house on approach RWY 24 and departure RWY 06.

FUEL Warrnambool AD - BP AVGAS - JET A1 Cardswipe bowser BP card only.

METEOROLOGICAL INFORMATION Warrnambool TAF.

PARKING AVBL for AIRCRAFT near windsock.

OWNER Moyne Shire 03 55 68 0555

INFORMATION contact MAX HOLMES 0408 528882 More at - www.moyne.vic.gov.au

PORT FAIRY TAXI 0419 764 983

DISCLAIMER

The information in this publication is advisory only. The Moyne Shire does not assume any legal liability or responsibility for the accuracy of the details set out in this publication. Pilots are reminded of their responsibilities under *CAR 92 (1)* to ensure that the place is suitable for use as an aerodrome.

PORT FAIRY ALA

Effective April 2010



View approach RWY 24



Cessna Titan & Beechcraft KingAir at Port Fairy ALA 19 Mar 2007